

## ARG83203 Monkey SFRP5 ELISA Kit

Package: 96 wells  
Store at: 4°C

### Summary

Product Description	ARG83203 Monkey SFRP5 ELISA Kit is an Enzyme Immunoassay kit for the quantification of Monkey in Serum, Plasma and Cell culture supernatants.
Tested Reactivity	Mk
Tested Application	ELISA
Specificity	There is no detectable cross-reactivity with other relevant proteins.
Target Name	SFRP5
Conjugation	HRP
Conjugation Note	Substrate: TMB and read at 450 nm.
Sensitivity	20 pg/ml
Detection Range	156 pg/ml - 10,000 pg/ml
Sample Type	Serum, Plasma and Cell culture supernatants
Precision	Intra-Assay CV: 6.8% Inter-Assay CV: 8.9%
Alternate Names	Secreted apoptosis-related protein 3; Secreted frizzled-related protein 5; SARP3; Frizzled-related protein 1b; SARP-3; FRP-1b; sFRP-5

### Application Instructions

Assay Time	~ 5 hours
------------	-----------

### Properties

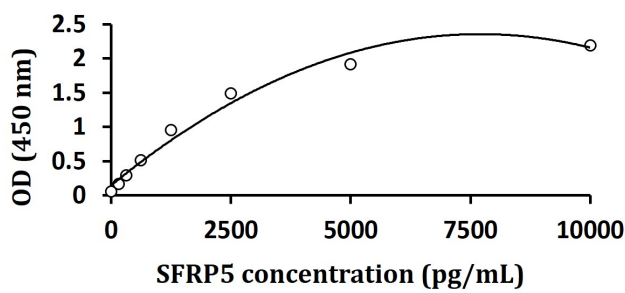
Form	96 well
Storage instruction	Store the kit at 2-8°C. Keep microplate wells sealed in a dry bag with desiccants. Do not expose test reagents to heat, sun or strong light during storage and usage. Please refer to the product user manual for detail temperatures of the components.
Note	For laboratory research only, not for drug, diagnostic or other use.

### Bioinformation

Gene Symbol	SFRP5
Gene Full Name	secreted frizzled-related protein 5
Background	Secreted frizzled-related protein 5 (SFRP5) is a member of the SFRP family that contains a cysteine-rich domain homologous to the putative Wnt-binding site of Frizzled proteins. SFRPs act as soluble modulators of Wnt signaling. SFRP5 and SFRP1 may be involved in determining the polarity of photoreceptor cells in the retina. SFRP5 is highly expressed in the retinal pigment epithelium, and moderately expressed in the pancreas. [provided by RefSeq, Jul 2008]

Function	Soluble frizzled-related proteins (sFRPS) function as modulators of Wnt signaling through direct interaction with Wnts. They have a role in regulating cell growth and differentiation in specific cell types. SFRP5 may be involved in determining the polarity of photoreceptor, and perhaps, other cells in the retina. [UniProt]
Highlight	<p>Related products:</p> <p>New ELISA data calculation tool: <a href="#">Simplify the ELISA analysis by GainData</a></p>

Images



ARG83203 Monkey SFRP5 ELISA Kit standard curve image

ARG83203 Monkey SFRP5 ELISA Kit results of a typical standard run with optical density reading at 450 nm.