

ARG83131 Rabbit BMP2 ELISA Kit

Package: 96 wells
Store at: 4°C

Summary

Product Description	ARG83131 Rabbit BMP2 ELISA Kit is an Enzyme Immunoassay kit for the quantification of Rabbit BMP2 in Serum, Bone tissue, Cell culture supernatants.
Tested Reactivity	Rb
Tested Application	ELISA
Specificity	There is no detectable cross-reactivity with other relevant proteins.
Target Name	BMP2
Conjugation	HRP
Conjugation Note	Substrate: TMB and read at 450 nm.
Sensitivity	less than 5 pg/ml
Detection Range	31.2 pg/ml - 2,000 pg/ml
Sample Type	Serum, Bone tissue, Cell culture supernatants.
Precision	Intra-Assay CV: 3.3% Inter-Assay CV: 6.8%
Alternate Names	BDA2; BMP2A; BMP-2; Bone morphogenetic protein 2A; Bone morphogenetic protein 2; BMP-2A

Application Instructions

Assay Time	~ 5 hours
------------	-----------

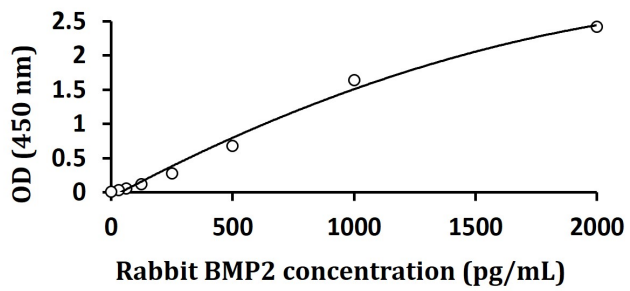
Properties

Form	96 well
Storage instruction	Store the kit at 2-8°C. Keep microplate wells sealed in a dry bag with desiccants. Do not expose test reagents to heat, sun or strong light during storage and usage. Please refer to the product user manual for detail temperatures of the components.
Note	For laboratory research only, not for drug, diagnostic or other use.

Bioinformation

Gene Symbol	BMP2
Gene Full Name	bone morphogenetic protein 2
Background	The protein encoded by this gene belongs to the transforming growth factor-beta (TGFB) superfamily. The encoded protein acts as a disulfide-linked homodimer and induces bone and cartilage formation.
Function	Induces cartilage and bone formation.
Highlight	Related products: BMP antibodies ; BMP ELISA Kits ; BMP recombinant proteins ;

Images



ARG83131 Rabbit BMP2 ELISA Kit standard curve image

ARG83131 Rabbit BMP2 ELISA Kit results of a typical standard run with optical density reading at 450 nm.