

ARG83014 Human IL36RN ELISA Kit

Package: 96 wells
Store at: 4°C

Summary

Product Description	ARG83014 Human IL36RN ELISA Kit is an Enzyme Immunoassay kit for the quantification of Human IL36RN in serum, plasma (heparin), ascites, urine and cell culture supernatants.
Tested Reactivity	Hu
Tested Application	ELISA
Specificity	Not cross-reacts with: Human IL1beta, IL1F7, IL1Ra, IL36 alpha, IL36 beta, IL36 gamma. Mouse IL-36Ra
Target Name	IL36RN
Conjugation	HRP
Conjugation Note	Substrate: TMB and read at 450 nm.
Sensitivity	0.078 ng/ml
Sample Type	Serum, plasma (heparin), ascites, urine and cell culture supernatants.
Standard Range	0.156 - 10 ng/ml
Sample Volume	100 µl
Precision	Intra-Assay CV: less than 10% Inter-Assay CV: less than 10%
Alternate Names	IL1RN , Interleukin 1 Receptor Antagonis, ICIL-1RA, IL-1RN, IL1RA, IL1F3, IRAP, Interleukin-1 Receptor Antagonist Protein, IL1 Inhibito, MGC10430, IL-1ra, Intracellular Interleukin-1 Receptor Antagonist (ICIL-1ra), Intracellular Interleukin-1 Receptor Antagonist, Intracellular IL-1 Receptor Antagonist Type II, Type II Interleukin-1 Receptor Antagonist, Anakinr, IL-1ra3, MVCD4, DIRA

Application Instructions

Assay Time	~ 4 hours
------------	-----------

Properties

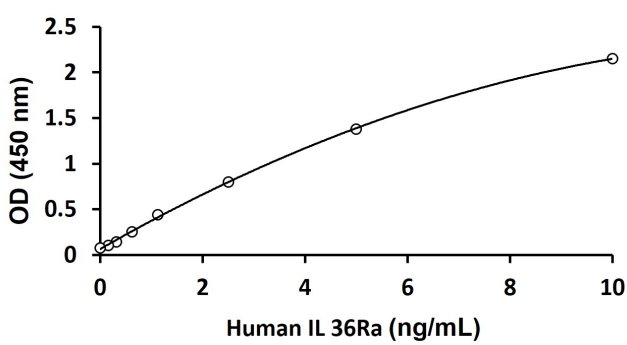
Form	96 well
Storage instruction	Store the kit at 2-8°C. Keep microplate wells sealed in a dry bag with desiccants. Do not expose test reagents to heat, sun or strong light during storage and usage. Please refer to the product user manual for detail temperatures of the components.
Note	For laboratory research only, not for drug, diagnostic or other use.

Bioinformation

Gene Symbol	IL1RN
Gene Full Name	Interleukin 1 Receptor Antagonist

Background	The protein encoded by this gene is a member of the interleukin 1 cytokine family. This protein inhibits the activities of interleukin 1, alpha (IL1A) and interleukin 1, beta (IL1B), and modulates a variety of interleukin 1 related immune and inflammatory responses, particularly in the acute phase of infection and inflammation. This gene and five other closely related cytokine genes form a gene cluster spanning approximately 400 kb on chromosome 2. A polymorphism of this gene is reported to be associated with increased risk of osteoporotic fractures and gastric cancer. Several alternatively spliced transcript variants encoding distinct isoforms have been reported. [provided by RefSeq, Aug 2020]
Function	Anti-inflammatory antagonist of interleukin-1 family of proinflammatory cytokines such as interleukin-1beta/IL1B and interleukin-1alpha/IL1A. Protects from immune dysregulation and uncontrolled systemic inflammation triggered by IL1 for a range of innate stimulatory agents such as pathogens. [UniProt]
PTM	Disulfide bond, Glycoprotein. [Uniprot]
Cellular Localization	Cytoplasm, Secreted. [UniProt]

Images



ARG83014 Human IL36RN ELISA Kit standard curve image

ARG83014 Human IL36RN ELISA Kit results of standard run with optical density reading at 450 nm