

## ARG82732 Human TPP1 ELISA Kit

Package: 96 wells  
Store at: 4°C

### Component

Cat. No.	Component Name	Package	Temp
ARG82732-001	Antibody-coated microplate	8 X 12 strips	4°C. Unused strips should be sealed tightly in the air-tight pouch.
ARG82732-002	Standard	2 X 10 ng/vial	4°C
ARG82732-003	Standard/Sample diluent	30 ml (Ready to use)	4°C
ARG82732-004	Antibody conjugate concentrate (100X)	1 vial (100 µl)	4°C
ARG82732-005	Antibody diluent buffer	12 ml (Ready to use)	4°C
ARG82732-006	HRP-Streptavidin concentrate (100X)	1 vial (100 µl)	4°C
ARG82732-007	HRP-Streptavidin diluent buffer	12 ml (Ready to use)	4°C
ARG82732-008	25X Wash buffer	20 ml	4°C
ARG82732-009	TMB substrate	10 ml (Ready to use)	4°C (Protect from light)
ARG82732-010	STOP solution	10 ml (Ready to use)	4°C
ARG82732-011	Plate sealer	4 strips	Room temperature

### Summary

Product Description	ARG82732 Human TPP1 ELISA Kit is an Enzyme Immunoassay kit for the quantification of Human TPP1 in serum, plasma (EDTA, heparin) and cell culture supernatants.
Tested Reactivity	Hu
Tested Application	ELISA
Target Name	TPP1
Conjugation	HRP
Conjugation Note	Substrate: TMB and read at 450 nm.
Sensitivity	78 pg/ml
Sample Type	Serum, plasma (EDTA, heparin) and cell culture supernatants.
Standard Range	156 - 10000 pg/ml
Sample Volume	100 µl
Precision	Intra-Assay CV: 4.6% Inter-Assay CV: 6.0%

Alternate Names	EC 3.4.14.9; TPP-1; Tripeptidyl-peptidase I; GIG1; Lysosomal pepstatin-insensitive protease; SCAR7; Tripeptidyl aminopeptidase; Tripeptidyl-peptidase 1; CLN2; LPIC; Cell growth-inhibiting gene 1 protein; TPP-I
-----------------	---

## Application Instructions

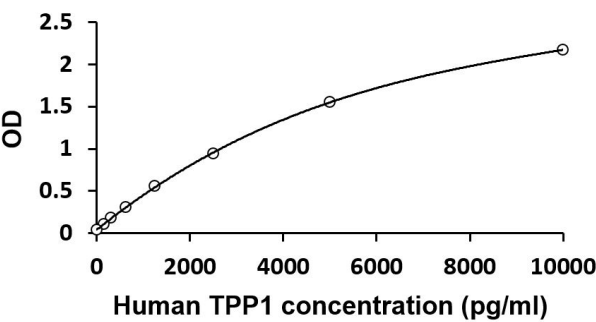
Assay Time	~ 5 hours
------------	-----------

## Properties

Form	96 well
Storage instruction	Store the kit at 2-8°C. Keep microplate wells sealed in a dry bag with desiccants. Do not expose test reagents to heat, sun or strong light during storage and usage. Please refer to the product user manual for detail temperatures of the components.
Note	For laboratory research only, not for drug, diagnostic or other use.

## Bioinformation

Gene Symbol	TPP1
Gene Full Name	tripeptidyl peptidase I
Background	This gene encodes a member of the sedolisin family of serine proteases. The protease functions in the lysosome to cleave N-terminal tripeptides from substrates, and has weaker endopeptidase activity. It is synthesized as a catalytically-inactive enzyme which is activated and auto-proteolyzed upon acidification. Mutations in this gene result in late-infantile neuronal ceroid lipofuscinosis, which is associated with the failure to degrade specific neuropeptides and a subunit of ATP synthase in the lysosome. [provided by RefSeq, Jul 2008]
Function	Lysosomal serine protease with tripeptidyl-peptidase I activity (PubMed:11054422, PubMed:19038966, PubMed:19038967). May act as a non-specific lysosomal peptidase which generates tripeptides from the breakdown products produced by lysosomal proteinases (PubMed:11054422, PubMed:19038966, PubMed:19038967). Requires substrates with an unsubstituted N-terminus (PubMed:19038966). [UniProt]
Highlight	Related products: <a href="#">TPP1 antibodies</a> ; <a href="#">TPP1 ELISA Kits</a> ; New ELISA data calculation tool: <a href="#">Simplify the ELISA analysis by GainData</a>
PTM	Activated by autocatalytic proteolytical processing upon acidification. N-glycosylation is required for processing and activity. [UniProt]
Cellular Localization	Lysosome. Melanosome. Note=Identified by mass spectrometry in melanosome fractions from stage I to stage IV. [UniProt]



ARG82732 Human TPP1 ELISA Kit standard curve image

ARG82732 Human TPP1 ELISA Kit results of a typical standard run with optical density reading at 450 nm.