

## ARG82713 Human SEZ6L ELISA Kit

Package: 96 wells  
Store at: 4°C

### Component

Cat. No.	Component Name	Package	Temp
ARG82713-001	Antibody-coated microplate	8 X 12 strips	4°C. Unused strips should be sealed tightly in the air-tight pouch.
ARG82713-002	Standard	2 X 20 ng/vial	4°C
ARG82713-003	Standard/Sample diluent	30 ml (Ready to use)	4°C
ARG82713-004	Antibody conjugate concentrate (100X)	1 vial (100 µl)	4°C
ARG82713-005	Antibody diluent buffer	12 ml (Ready to use)	4°C
ARG82713-006	HRP-Streptavidin concentrate (100X)	1 vial (100 µl)	4°C
ARG82713-007	HRP-Streptavidin diluent buffer	12 ml (Ready to use)	4°C
ARG82713-008	25X Wash buffer	20 ml	4°C
ARG82713-009	TMB substrate	10 ml (Ready to use)	4°C (Protect from light)
ARG82713-010	STOP solution	10 ml (Ready to use)	4°C
ARG82713-011	Plate sealer	4 strips	Room temperature

### Summary

Product Description	ARG82713 Human SEZ6L ELISA Kit is an Enzyme Immunoassay kit for the quantification of Human SEZ6L in serum, plasma (heparin) and cell culture supernatants.
Tested Reactivity	Hu
Tested Application	ELISA
Target Name	SEZ6L
Conjugation	HRP
Conjugation Note	Substrate: TMB and read at 450 nm.
Sensitivity	0.156 ng/ml
Sample Type	Serum, plasma (heparin) and cell culture supernatants.
Standard Range	0.312 - 20 ng/ml
Sample Volume	100 µl
Precision	Intra-Assay CV: 6.3% Inter-Assay CV: 5.9%

Alternate Names

Seizure 6-like protein

Application Instructions

Assay Time

~ 5 hours

Properties

Form

96 well

Storage instruction

Store the kit at 2-8°C. Keep microplate wells sealed in a dry bag with desiccants. Do not expose test reagents to heat, sun or strong light during storage and usage. Please refer to the product user manual for detail temperatures of the components.

Note

For laboratory research only, not for drug, diagnostic or other use.

Bioinformation

Gene Symbol

SEZ6L

Gene Full Name

seizure related 6 homolog (mouse)-like

Function

May contribute to specialized endoplasmic reticulum functions in neurons. [UniProt]

Highlight

Related products:  
[SEZ6L ELISA Kits;](#)  
New ELISA data calculation tool:  
[Simplify the ELISA analysis by GainData](#)

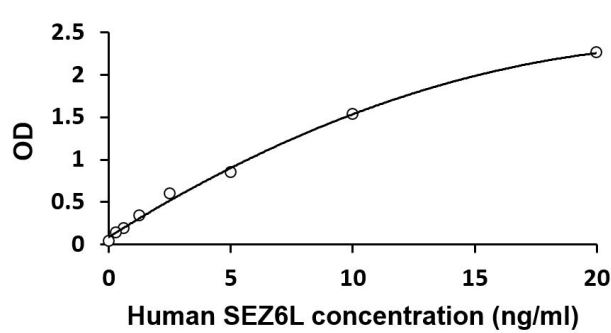
PTM

O-glycosylated. [UniProt]

Cellular Localization

Endoplasmic reticulum membrane; Single-pass type I membrane protein. [UniProt]

Images



ARG82713 Human SEZ6L ELISA Kit standard curve image

ARG82713 Human SEZ6L ELISA Kit results of a typical standard run with optical density reading at 450 nm.