

ARG82610 Human IL35 ELISA Kit

Package: 96 wells
Store at: 4°C

Summary

Product Description	ARG82610 Human IL35 ELISA Kit is an Enzyme Immunoassay kit for the quantification of Human IL35 in serum, plasma and cell culture supernatants.
Tested Reactivity	Hu
Tested Application	ELISA
Specificity	This kit could assay both natural and recombinant Human IL35. No significant cross-reactivity or interference was observed in the following samples: Human: EBI3, gp130, IL1 beta, IL2, IL4, IL5, IL6, IL8, IL10, IL12, IL12 / IL35 p35, IL17A, IL18, IL21, IL22, IL23, IL27 and IL27RA. Mouse: EBI3, IFN gamma, IL1 beta, IL2, IL4, IL6, IL10, IL17A and TNF alpha. Rat: IFN gamma, IL1 beta, IL2, IL4, IL6, IL10, IL17A and TNF alpha.
Target Name	IL35
Conjugation	HRP
Conjugation Note	Substrate: TMB and read at 450 nm.
Sensitivity	0.24 ng/ml
Sample Type	Serum, plasma and cell culture supernatants.
Standard Range	0.469 ng/ml - 30 ng/ml
Sample Volume	100 µl
Precision	Intra-Assay CV: less than 5% Inter-Assay CV: less than 5%
Alternate Names	CLMF; Cytotoxic lymphocyte maturation factor 35 kDa subunit; NFSK; NK cell stimulatory factor chain 1; CLMF p35; NKSF1; IL-12 subunit p35; IL-12A; Interleukin-12 subunit alpha; P35; Interleukin 35; IL-35; IL35; Interleukin-27 subunit beta, EBI3; Human Interleukin 35 ELISA kit; Human IL-35 ELISA kit;

Application Instructions

Assay Time	~ 4.5 hours
------------	-------------

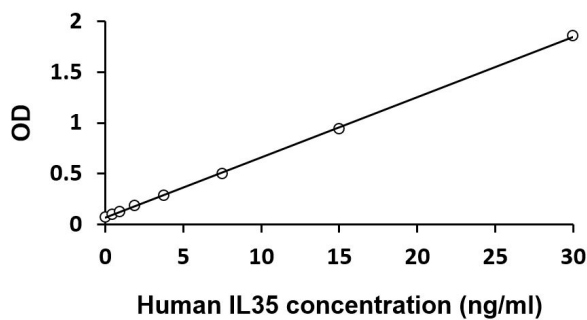
Properties

Form	96 well
Storage instruction	Store the kit at 2-8°C. Keep microplate wells sealed in a dry bag with desiccants. Do not expose test reagents to heat, sun or strong light during storage and usage. Please refer to the product user manual for detail temperatures of the components.
Note	For laboratory research only, not for drug, diagnostic or other use.

Bioinformation

Gene Symbol	IL12A + EBI3
Gene Full Name	Interleukin 35
Background	IL35 (Interleukin 35) is a dimeric protein composed of IL-12 α and IL-27 β chains, which are encoded by two separate genes called IL12A and EBI3, respectively. IL-35 receptor consists of IL-12R β 2 (part of the IL-12R) and gp130 (part of IL-27R) chains. Compared to these two related interleukins, IL-35 is also able to signal through only one of the aforementioned chains. This was proven in vivo when absence of either of the receptor chains did not influence effects of IL-35. [provided by Wikipedia: Interleukin 35]
Function	IL35 (Interleukin 35) secreted by regulatory T-cells (Tregs), regulatory B-cells (Bregs) or even CD8+ regulatory T cells, IL-35 suppresses inflammatory responses of immune cells. IL-35 is not constitutively expressed in tissues, but the gene encoding IL-35 is transcribed by vascular endothelial cells, smooth muscle cells and monocytes after activation with proinflammatory stimuli. IL-35 has selective activities on different T-cell subsets; it induces proliferation of Treg cell populations but reduces activity of Th17 cell populations. [provided by Wikipedia: Interleukin 35]
Highlight	Related products: New ELISA data calculation tool: Simplify the ELISA analysis by GainData
Cellular Localization	Secreted. [UniProt]

Images



ARG82610 Human IL35 ELISA Kit standard curve image

ARG82610 Human IL35 ELISA Kit results of a typical standard run with optical density reading at 450 nm.