

ARG82542 Rat Semaphorin 6A ELISA Kit

Package: 96 wells
Store at: 4°C

Component

Cat. No.	Component Name	Package	Temp
ARG82542-001	Antibody-coated microplate	8 X 12 strips	4°C. Unused strips should be sealed tightly in the air-tight pouch.
ARG82542-002	Standard	2 X 10 ng/vial	4°C
ARG82542-003	Standard/Sample diluent	30 ml (Ready to use)	4°C
ARG82542-004	Antibody conjugate concentrate (100X)	1 vial (100 µl)	4°C
ARG82542-005	Antibody diluent buffer	12 ml (Ready to use)	4°C
ARG82542-006	HRP-Streptavidin concentrate (100X)	1 vial (100 µl)	4°C
ARG82542-007	HRP-Streptavidin diluent buffer	12 ml (Ready to use)	4°C
ARG82542-008	25X Wash buffer	20 ml	4°C
ARG82542-009	TMB substrate	10 ml (Ready to use)	4°C (Protect from light)
ARG82542-010	STOP solution	10 ml (Ready to use)	4°C
ARG82542-011	Plate sealer	4 strips	Room temperature

Summary

Product Description	ARG82542 Rat Semaphorin 6A ELISA Kit is an Enzyme Immunoassay kit for the quantification of Rat Semaphorin 6A in serum, plasma (EDTA, heparin, citrate) and cell culture supernatants.
Tested Reactivity	Rat
Tested Application	ELISA
Target Name	Semaphorin 6A
Conjugation	HRP
Conjugation Note	Substrate: TMB and read at 450 nm.
Sensitivity	50 pg/ml
Sample Type	Serum, plasma (EDTA, heparin, citrate) and cell culture supernatants.
Standard Range	62.5 - 4000 pg/ml
Sample Volume	100 µl
Precision	Intra-Assay CV: 4.8% Inter-Assay CV: 6.3%

Alternate Names	VIA; Semaphorin VIA; Semaphorin-6A; SEMAQ; Semaphorin-6A-1; SEMA; Sema VIA; SEMA6A-1; HT018; SEMA6A1
-----------------	--

Application Instructions

Assay Time	~ 5 hours
------------	-----------

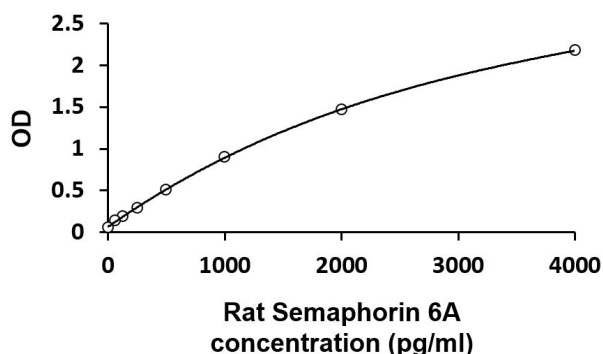
Properties

Form	96 well
Storage instruction	Store the kit at 2-8°C. Keep microplate wells sealed in a dry bag with desiccants. Do not expose test reagents to heat, sun or strong light during storage and usage. Please refer to the product user manual for detail temperatures of the components.
Note	For laboratory research only, not for drug, diagnostic or other use.

Bioinformation

Gene Symbol	SEMA6A
Gene Full Name	sema domain, transmembrane domain (TM), and cytoplasmic domain, (semaphorin) 6A
Background	The transmembrane semaphorin SEMA6A is expressed in developing neural tissue and is required for proper development of the thalamocortical projection (Leighton et al., 2001 [PubMed 11242070]).[supplied by OMIM, Feb 2011]
Function	Cell surface receptor for PLXNA2 that plays an important role in cell-cell signaling. Required for normal granule cell migration in the developing cerebellum. Promotes reorganization of the actin cytoskeleton and plays an important role in axon guidance in the developing central nervous system. Can act as repulsive axon guidance cue. Has repulsive action towards migrating granular neurons. May play a role in channeling sympathetic axons into the sympathetic chains and controlling the temporal sequence of sympathetic target innervation (By similarity). [UniProt]
Highlight	Related products: Semaphorin antibodies ; Semaphorin ELISA Kits ; New ELISA data calculation tool: Simplify the ELISA analysis by GainData
Cellular Localization	Cell membrane; Single-pass type I membrane protein. [UniProt]

Images



ARG82542 Rat Semaphorin 6A ELISA Kit standard curve image

ARG82542 Rat Semaphorin 6A ELISA Kit results of a typical standard run with optical density reading at 450 nm.