

ARG82433 Human CHRDL1 ELISA Kit

Package: 96 wells
Store at: 4°C

Component

Cat. No.	Component Name	Package	Temp
ARG82433-001	Antibody-coated microplate	8 X 12 strips	4°C. Unused strips should be sealed tightly in the air-tight pouch.
ARG82433-002	Standard	2 X 10 ng/vial	4°C
ARG82433-003	Standard/Sample diluent	30 ml (Ready to use)	4°C
ARG82433-004	Antibody conjugate concentrate (100X)	1 vial (100 µl)	4°C
ARG82433-005	Antibody diluent buffer	12 ml (Ready to use)	4°C
ARG82433-006	HRP-Streptavidin concentrate (100X)	1 vial (100 µl)	4°C
ARG82433-007	HRP-Streptavidin diluent buffer	12 ml (Ready to use)	4°C
ARG82433-008	25X Wash buffer	20 ml	4°C
ARG82433-009	TMB substrate	10 ml (Ready to use)	4°C (Protect from light)
ARG82433-010	STOP solution	10 ml (Ready to use)	4°C
ARG82433-011	Plate sealer	4 strips	Room temperature

Summary

Product Description	ARG82433 Human CHRDL1 ELISA Kit is an Enzyme Immunoassay kit for the quantification of Human CHRDL1 in serum, plasma (EDTA, heparin) and cell culture supernatants.
Tested Reactivity	Hu
Tested Application	ELISA
Target Name	CHRDL1
Conjugation	HRP
Conjugation Note	Substrate: TMB and read at 450 nm.
Sensitivity	50 pg/ml
Sample Type	Serum, plasma (EDTA, heparin) and cell culture supernatants.
Standard Range	93.7 - 6000 pg/ml
Sample Volume	100 µl
Precision	Intra-Assay CV: 5.4% Inter-Assay CV: 6.7%

Alternate Names	MGCN; Neurogenesis-1; dA141H5.1; Ventroptin; CHL; NRLN1; Chordin-like protein 1; VOPT; Neuralin-1; MGC1
-----------------	---

Application Instructions

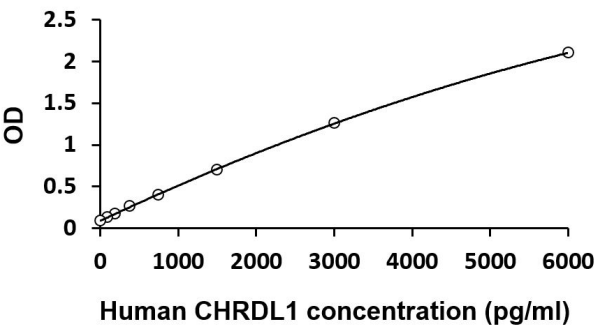
Assay Time	~ 5 hours
------------	-----------

Properties

Form	96 well
Storage instruction	Store the kit at 2-8°C. Keep microplate wells sealed in a dry bag with desiccants. Do not expose test reagents to heat, sun or strong light during storage and usage. Please refer to the product user manual for detail temperatures of the components.
Note	For laboratory research only, not for drug, diagnostic or other use.

Bioinformation

Gene Symbol	CHRD1
Gene Full Name	chordin-like 1
Background	This gene encodes an antagonist of bone morphogenetic protein 4. The encoded protein may play a role in topographic retinotectal projection and in the regulation of retinal angiogenesis in response to hypoxia. Alternatively spliced transcript variants encoding different isoforms have been described. [provided by RefSeq, Jan 2009]
Function	Antagonizes the function of BMP4 by binding to it and preventing its interaction with receptors. Alters the fate commitment of neural stem cells from gliogenesis to neurogenesis. Contributes to neuronal differentiation of neural stem cells in the brain by preventing the adoption of a glial fate. May play a crucial role in dorsoventral axis formation. May play a role in embryonic bone formation (By similarity). May also play an important role in regulating retinal angiogenesis through modulation of BMP4 actions in endothelial cells. Plays a role during anterior segment eye development. [UniProt]
Highlight	Related products: CHRD1 antibodies ; CHRD1 ELISA Kits ; New ELISA data calculation tool: Simplify the ELISA analysis by GainData
Cellular Localization	Secreted. [UniProt]



ARG82433 Human CHRDL1 ELISA Kit standard curve image

ARG82433 Human CHRDL1 ELISA Kit results of a typical standard run with optical density reading at 450 nm.