

ARG82315 Human S100A7 / Psoriasin ELISA Kit

Package: 96 wells
Store at: 4°C

Summary

Product Description	ARG82315 Human S100A7 / Psoriasin ELISA Kit is an Enzyme Immunoassay kit for the quantification of Human S100A7 / Psoriasin in serum, plasma and cell culture supernatants.
Tested Reactivity	Hu
Tested Application	ELISA
Specificity	Not react with following Human recombinant proteins: ApoAI, BMP1, BMP2, BMP3, BMP4, BMP7, CRP, HGF, HSP27, IL1 alpha, IL1 RI, IL1 beta, IL1RA, IL2, IL4, IL5, IL6, IL8, IL10, IL12, IL13, IL15, IL17C, IL21, IL23, IFN gamma, MMP2, sIL2R, sIL6R, PDGF, PLA2G7, prolactin, S100A1, S100B, S100A9, S100A12, TGF beta 1, TGF beta 2, TGF beta 3, TLR1, TLR2, TLR3, TNF alpha, TNF RI, TNF RII and VEGF.
Target Name	S100A7 / Psoriasin
Conjugation	HRP
Conjugation Note	Read at 450 nm.
Sensitivity	62.5 pg/ml
Sample Type	Serum, plasma and cell culture supernatants.
Standard Range	125 - 8000 pg/ml
Sample Volume	100 µl
Precision	Intra-Assay CV: 6% Inter-Assay CV: 9%
Alternate Names	S100A7c; S100 calcium-binding protein A7; PSOR1; Psoriasin; Protein S100-A7

Application Instructions

Assay Time	~ 3 hours
------------	-----------

Properties

Form	96 well
Storage instruction	Store the kit at 2-8°C. Keep microplate wells sealed in a dry bag with desiccants. Do not expose test reagents to heat, sun or strong light during storage and usage. Please refer to the product user manual for detail temperatures of the components.
Note	For laboratory research only, not for drug, diagnostic or other use.

Bioinformation

Gene Symbol	S100A7
Gene Full Name	S100 calcium binding protein A7
Background	The protein encoded by this gene is a member of the S100 family of proteins containing 2 EF-hand calcium-binding motifs. S100 proteins are localized in the cytoplasm and/or nucleus of a wide range of

cells, and involved in the regulation of a number of cellular processes such as cell cycle progression and differentiation. S100 genes include at least 13 members which are located as a cluster on chromosome 1q21. This protein differs from the other S100 proteins of known structure in its lack of calcium binding ability in one EF-hand at the N-terminus. The protein is overexpressed in hyperproliferative skin diseases, exhibits antimicrobial activities against bacteria and induces immunomodulatory activities. [provided by RefSeq, Nov 2014]

Highlight

Related products:

[S100A antibodies](#); [S100A ELISA Kits](#);

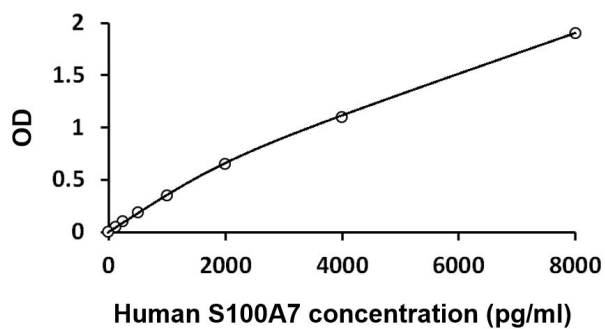
New ELISA data calculation tool:

[Simplify the ELISA analysis by GainData](#)

Cellular Localization

Cytoplasm. Secreted. Note=Secreted by a non-classical secretory pathway. [UniProt]

Images



ARG82315 Human S100A7 / Psoriasin ELISA Kit standard curve image

ARG82315 Human S100A7 / Psoriasin ELISA Kit results of a typical standard run with optical density reading at 450 nm.