

ARG82253 Human PTH / Parathyroid Hormone (1-34) ELISA Kit

Package: 96 wells
Store at: 4°C

Summary

Product Description	ARG82253 Human PTH / Parathyroid Hormone (1-34) ELISA Kit is an Enzyme Immunoassay kit for the quantification of Human PTH (1-34) in plasma.
Tested Reactivity	Hu
Tested Application	ELISA
Specificity	Cross Reactivity: Human PTH (1-34): 100% Rat PTH (1-34): 85.7% Human PTH (1-84), Human PTH (53-84), VIP, Human CGRP, Salmon Calcitonin and GLP-2: 0%
Target Name	PTH / Parathyroid Hormone (1-34)
Conjugation	HRP
Conjugation Note	Substrate: TMB and read at 450 nm.
Sensitivity	0.22 ng/ml
Detection Range	0.22 - 3.4 ng/ml
Sample Type	Plasma
Standard Range	0.01 - 100 ng/ml
Sample Volume	50 µl
Precision	Intra-Assay CV: less than 10% Inter-Assay CV: less than 15%
Alternate Names	PTH1; Parathyroid hormone; Parathyrin; Parathormone; PTH

Application Instructions

Assay Time	~ 4 hours
------------	-----------

Properties

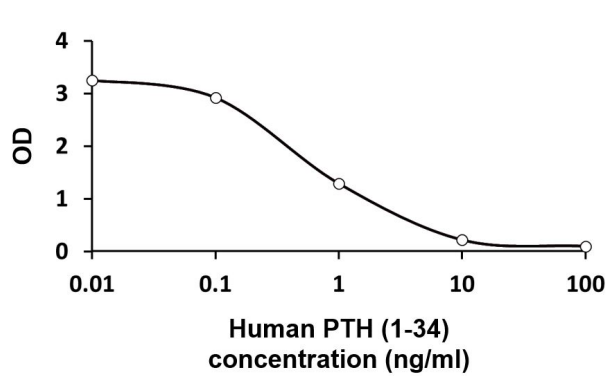
Form	96 well
Storage instruction	Store the kit at 2-8°C. Keep microplate wells sealed in a dry bag with desiccants. Do not expose test reagents to heat, sun or strong light during storage and usage. Please refer to the product user manual for detail temperatures of the components.
Note	For laboratory research only, not for drug, diagnostic or other use.

Bioinformation

Gene Symbol	PTH
Gene Full Name	parathyroid hormone

Background	The protein encoded by this gene is a hormone secreted by parathyroid cells. This hormone elevates blood Ca2+ level by dissolving the salts in bone and preventing their renal excretion. Defects in this gene are a cause of familial isolated hypoparathyroidism (FIH). [provided by RefSeq, Jul 2008]
Function	PTH elevates calcium level by dissolving the salts in bone and preventing their renal excretion. Stimulates [1-14C]-2-deoxy-D-glucose (2DG) transport and glycogen synthesis in osteoblastic cells. [UniProt]
Highlight	Related products: PTH antibodies ; PTH ELISA Kits ; PTH Duos / Panels ; New ELISA data calculation tool: Simplify the ELISA analysis by GainData
Cellular Localization	Secreted. [UniProt]

Images



ARG82253 Human PTH / Parathyroid Hormone (1-34) ELISA Kit standard curve image

ARG82253 Human PTH / Parathyroid Hormone (1-34) ELISA Kit results of a typical standard run with optical density reading at 450 nm.