

ARG82053 Mouse Gremlin ELISA Kit

Package: 96 wells
Store at: 4°C

Summary

Product Description	Mouse Gremlin ELISA Kit is an Enzyme Immunoassay kit for the quantification of Mouse Gremlin in serum, plasma and cell culture supernatants.
Tested Reactivity	Ms
Tested Application	ELISA
Target Name	Gremlin
Conjugation	HRP
Conjugation Note	Substrate: TMB and read at 450 nm.
Sensitivity	46.9 pg/ml
Sample Type	Serum, plasma and cell culture supernatants.
Standard Range	93.8 - 6000 pg/ml
Sample Volume	100 µl
Alternate Names	GREMLIN; Increased in high glucose protein 2; Gremlin-1; DUP15q; DAND2; CRAC1; MPSH; CKTSF1B1; PIG2; DRM; HMPS1; DAN domain family member 2; IHG-2; HMPS; Cysteine knot superfamily 1, BMP antagonist 1; Cell proliferation-inducing gene 2 protein; C15DUPq; CRCS4; Down-regulated in Mos-transformed cells protein

Application Instructions

Assay Time	4.5 hours
------------	-----------

Properties

Form	96 well
Storage instruction	Store the kit at 2-8°C. Keep microplate wells sealed in a dry bag with desiccants. Do not expose test reagents to heat, sun or strong light during storage and usage. Please refer to the product user manual for detail temperatures of the components.
Note	For laboratory research only, not for drug, diagnostic or other use.

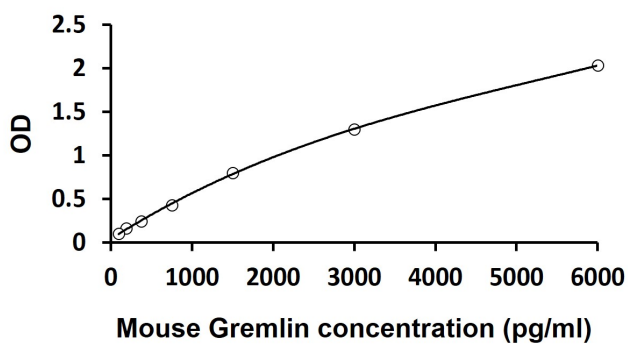
Bioinformation

Gene Symbol	GREM1
Gene Full Name	gremlin 1, DAN family BMP antagonist
Background	This gene encodes a member of the BMP (bone morphogenic protein) antagonist family. Like BMPs, BMP antagonists contain cystine knots and typically form homo- and heterodimers. The CAN (cerberus and dan) subfamily of BMP antagonists, to which this gene belongs, is characterized by a C-terminal cystine knot with an eight-membered ring. The antagonistic effect of the secreted glycosylated protein encoded by this gene is likely due to its direct binding to BMP proteins. As an antagonist of BMP, this gene may play a role in regulating organogenesis, body patterning, and tissue differentiation. In mouse,

this protein has been shown to relay the sonic hedgehog (SHH) signal from the polarizing region to the apical ectodermal ridge during limb bud outgrowth. Alternatively spliced transcript variants encoding different isoforms have been found for this gene. [provided by RefSeq, Jul 2010]

Function	Cytokine that may play an important role during carcinogenesis and metanephric kidney organogenesis, as a BMP antagonist required for early limb outgrowth and patterning in maintaining the FGF4-SHH feedback loop. Down-regulates the BMP4 signaling in a dose-dependent manner. Acts as inhibitor of monocyte chemotaxis (By similarity). [UniProt]
Highlight	Related products: Gremlin antibodies ; Gremlin ELISA Kits ; New ELISA data calculation tool: Simplify the ELISA analysis by GainData
Cellular Localization	Secreted. [UniProt]

Images



ARG82053 Mouse Gremlin ELISA Kit standard curve image

ARG82053 Mouse Gremlin ELISA Kit results of a typical standard run with optical density reading at 450 nm.