

ARG82017 Trehalase Assay Kit

Package: 96 wells
Store at: 4°C

Summary

Product Description	ARG82017 Trehalase Assay Kit is a detection kit for the quantification of Trehalase Activity in urine, serum, plasma, tissue extracts, cell lysate and cell culture supernatants.
Tested Reactivity	All
Tested Application	FuncSt
Target Name	Trehalase
Conjugation Note	Read at 540 nm.
Sensitivity	0.5 mmol/l
Detection Range	0.5 - 5 mmol/l
Sample Type	Urine, serum, plasma, tissue extracts, cell lysate and cell culture supernatants.
Sample Volume	40 µl
Alternate Names	EC 3.2.1.28; TREA; TRE; Alpha,alpha-trehalose glucohydrolase; Trehalase; Alpha,alpha-trehalase

Application Instructions

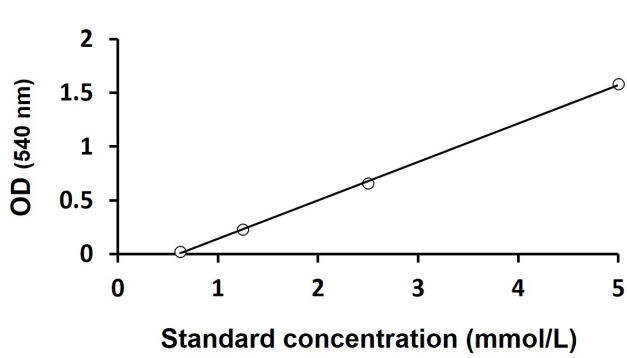
Assay Time	20 min
------------	--------

Properties

Form	96 well
Storage instruction	Store the kit at 2-8°C. Keep microplate wells sealed in a dry bag with desiccants. Do not expose test reagents to heat, sun or strong light during storage and usage. Please refer to the product user manual for detail temperatures of the components.
Note	For laboratory research only, not for drug, diagnostic or other use.

Bioinformation

Gene Symbol	TREH
Gene Full Name	trehalase (brush-border membrane glycoprotein)
Background	This gene encodes an enzyme that hydrolyses trehalose, a disaccharide formed from two glucose molecules found mainly in fungi, plants, and insects. A partial duplication of this gene is located adjacent to this locus on chromosome 11. Two transcript variants encoding different isoforms have been found for this gene. [provided by RefSeq, Jul 2014]
Function	Intestinal trehalase is probably involved in the hydrolysis of ingested trehalose. [UniProt]
Cellular Localization	Cell membrane; Lipid-anchor, GPI-anchor. [UniProt]



ARG82017 Trehalase Assay Kit typical data demonstration image

ARG82017 Trehalase Assay Kit results of a typical data with optical density reading at 540 nm.