

## ARG81746 Mouse Mannan Binding Lectin ELISA Kit

Package: 96 wells  
Store at: 4°C

### Component

| Cat. No.     | Component Name                        | Package              | Temp  |
|--------------|---------------------------------------|----------------------|---|
| ARG81746-001 | Antibody-coated microplate            | 8 X 12 strips        | 4°C. Unused strips should be sealed tightly in the air-tight pouch. |
| ARG81746-002 | Standard                              | 2 X 20 ng/vial       | 4°C   |
| ARG81746-003 | Standard/Sample diluent               | 30 ml (Ready to use) | 4°C   |
| ARG81746-004 | Antibody conjugate concentrate (100X) | 1 vial (100 µl)      | 4°C   |
| ARG81746-005 | Antibody diluent buffer               | 12 ml (Ready to use) | 4°C   |
| ARG81746-006 | HRP-Streptavidin concentrate (100X)   | 1 vial (100 µl)      | 4°C   |
| ARG81746-007 | HRP-Streptavidin diluent buffer       | 12 ml (Ready to use) | 4°C   |
| ARG81746-008 | 25X Wash buffer                       | 20 ml                | 4°C   |
| ARG81746-009 | TMB substrate                         | 10 ml (Ready to use) | 4°C (Protect from light)  |
| ARG81746-010 | STOP solution                         | 10 ml (Ready to use) | 4°C   |
| ARG81746-011 | Plate sealer                          | 4 strips             | Room temperature  |

### Summary

|                     |   |
|---------------------|---|
| Product Description | ARG81746 Mouse Mannan Binding Lectin ELISA Kit is an Enzyme Immunoassay kit for the quantification of Mouse Mannan Binding Lectin in serum, plasma (heparin, EDTA) and cell culture supernatants. |
| Tested Reactivity   | Ms  |
| Tested Application  | ELISA   |
| Specificity         | There is no detectable cross-reactivity with other relevant proteins.   |
| Target Name         | Mannan Binding Lectin   |
| Conjugation         | HRP   |
| Conjugation Note    | Substrate: TMB and read at 450 nm.  |
| Sensitivity         | 156 pg/ml   |
| Sample Type         | Serum, plasma (heparin, EDTA) and cell culture supernatants.  |
| Standard Range      | 312 - 20000 pg/ml   |
| Sample Volume       | 100 µl  |

|                 |  |
|-----------------|--|
| Precision       | Intra-Assay CV: 5.4%; Inter-Assay CV: 6.6%   |
| Alternate Names | MBL; Mannose-binding lectin; HSMBPC; Mannose-binding protein C; MBP1; COLEC1; MBL2D; MBP-C; Mannan-binding protein; Collectin-1; MBP; MBPD |

## Application Instructions

|            |           |
|------------|-----------|
| Assay Time | ~ 5 hours |
|------------|-----------|

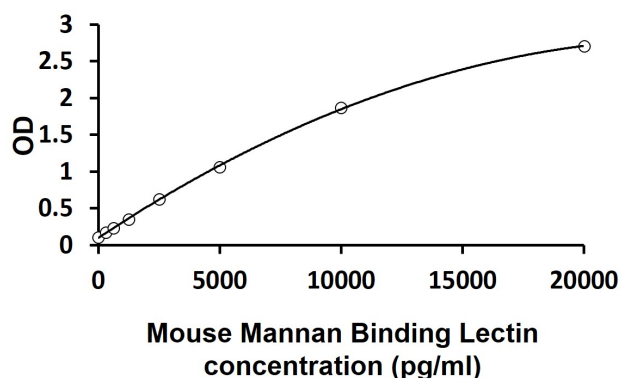
## Properties

|                     |  |
|---------------------|--|
| Form                | 96 well  |
| Storage instruction | Store the kit at 2-8°C. Keep microplate wells sealed in a dry bag with desiccants. Do not expose test reagents to heat, sun or strong light during storage and usage. Please refer to the product user manual for detail temperatures of the components. |
| Note                | For laboratory research only, not for drug, diagnostic or other use.   |

## Bioinformation

|                |   |
|----------------|---|
| Gene Symbol    | MBL2  |
| Gene Full Name | mannose-binding lectin (protein C) 2, soluble   |
| Background     | This gene encodes the soluble mannose-binding lectin or mannose-binding protein found in serum. The protein encoded belongs to the collectin family and is an important element in the innate immune system. The protein recognizes mannose and N-acetylglucosamine on many microorganisms, and is capable of activating the classical complement pathway. Deficiencies of this gene have been associated with susceptibility to autoimmune and infectious diseases. [provided by RefSeq, Jul 2008] |
| Function       | Calcium-dependent lectin involved in innate immune defense. Binds mannose, fucose and N-acetylglucosamine on different microorganisms and activates the lectin complement pathway. Binds to late apoptotic cells, as well as to apoptotic blebs and to necrotic cells, but not to early apoptotic cells, facilitating their uptake by macrophages. May bind DNA. [UniProt]  |
| Highlight      | Related products:<br><a href="#">Mannan Binding Lectin antibodies</a> ; <a href="#">Mannan Binding Lectin ELISA Kits</a> ;<br>New ELISA data calculation tool:<br><a href="#">Simplify the ELISA analysis by GainData</a>   |

## Images



ARG81746 Mouse Mannan Binding Lectin ELISA Kit standard curve image

ARG81746 Mouse Mannan Binding Lectin ELISA Kit results of a typical standard run with optical density reading at 450 nm.