

ARG81732 Mouse ESM1 ELISA Kit

Package: 96 wells
Store at: 4°C

Component

Cat. No.	Component Name	Package	Temp
ARG81732-001	Antibody-coated microplate	8 X 12 strips	4°C. Unused strips should be sealed tightly in the air-tight pouch.
ARG81732-002	Standard	2 X 10 ng/vial	4°C
ARG81732-003	Standard/Sample diluent	30 ml (Ready to use)	4°C
ARG81732-004	Antibody conjugate concentrate (100X)	1 vial (100 µl)	4°C
ARG81732-005	Antibody diluent buffer	12 ml (Ready to use)	4°C
ARG81732-006	HRP-Streptavidin concentrate (100X)	1 vial (100 µl)	4°C
ARG81732-007	HRP-Streptavidin diluent buffer	12 ml (Ready to use)	4°C
ARG81732-008	25X Wash buffer	20 ml	4°C
ARG81732-009	TMB substrate	10 ml (Ready to use)	4°C (Protect from light)
ARG81732-010	STOP solution	10 ml (Ready to use)	4°C
ARG81732-011	Plate sealer	4 strips	Room temperature

Summary

Product Description	ARG81732 Mouse ESM1 ELISA Kit is an Enzyme Immunoassay kit for the quantification of Mouse ESM1 in serum, plasma (heparin, EDTA) and cell culture supernatants.
Tested Reactivity	Ms
Tested Application	ELISA
Specificity	There is no detectable cross-reactivity with other relevant proteins.
Target Name	ESM1
Conjugation	HRP
Conjugation Note	Substrate: TMB and read at 450 nm.
Sensitivity	11.7 pg/ml
Sample Type	Serum, plasma (heparin, EDTA) and cell culture supernatants.
Standard Range	23.4 - 1500 pg/ml
Sample Volume	100 µl

Precision	Intra-Assay CV: 6.6%; Inter-Assay CV: 7.8%
Alternate Names	endocan; Endothelial cell-specific molecule 1; ESM-1

Application Instructions

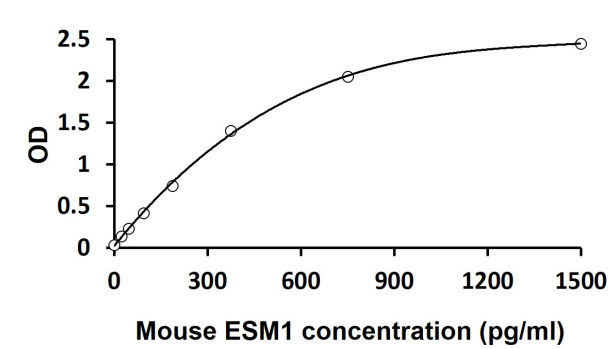
Assay Time	~ 5 hours
------------	-----------

Properties

Form	96 well
Storage instruction	Store the kit at 2-8°C. Keep microplate wells sealed in a dry bag with desiccants. Do not expose test reagents to heat, sun or strong light during storage and usage. Please refer to the product user manual for detail temperatures of the components.
Note	For laboratory research only, not for drug, diagnostic or other use.

Bioinformation

Gene Symbol	ESM1
Gene Full Name	endothelial cell-specific molecule 1
Background	This gene encodes a secreted protein which is mainly expressed in the endothelial cells in human lung and kidney tissues. The expression of this gene is regulated by cytokines, suggesting that it may play a role in endothelium-dependent pathological disorders. The transcript contains multiple polyadenylation and mRNA instability signals. Two transcript variants encoding different isoforms have been found for this gene. [provided by RefSeq, Oct 2008]
Function	Involved in angiogenesis; promotes angiogenic sprouting. May have potent implications in lung endothelial cell-leukocyte interactions. [UniProt]
Highlight	Related products: ESM1 ELISA Kits ; New ELISA data calculation tool: Simplify the ELISA analysis by GainData
PTM	May contain intrachain disulfide bonds. O-glycosylated; contains chondroitin sulfate and dermatan sulfate. [UniProt]



ARG81732 Mouse ESM1 ELISA Kit standard curve image

ARG81732 Mouse ESM1 ELISA Kit results of a typical standard run with optical density reading at 450 nm.