

ARG81493 Human Progranulin ELISA Kit

Package: 96 wells
Store at: 4°C

Component

Cat. No.	Component Name	Package	Temp
ARG81493-001	Antibody-coated microplate	8 X 12 strips	4°C. Unused strips should be sealed tightly in the air-tight pouch.
ARG81493-002	Standard	2 X 100 ng/vial	4°C
ARG81493-003	Standard/Sample diluent	30 ml (Ready to use)	4°C
ARG81493-004	Antibody conjugate concentrate (100X)	1 vial (100 µl)	4°C
ARG81493-005	Antibody diluent buffer	12 ml (Ready to use)	4°C
ARG81493-006	HRP-Streptavidin concentrate (100X)	1 vial (100 µl)	4°C
ARG81493-007	HRP-Streptavidin diluent buffer	12 ml (Ready to use)	4°C
ARG81493-008	25X Wash buffer	20 ml	4°C
ARG81493-009	TMB substrate	10 ml (Ready to use)	4°C (Protect from light)
ARG81493-010	STOP solution	10 ml (Ready to use)	4°C
ARG81493-011	Plate sealer	4 strips	Room temperature

Summary

Product Description	ARG81493 Human Progranulin ELISA Kit is an Enzyme Immunoassay kit for the quantification of Human Progranulin in serum, plasma (heparin, EDTA), saliva, urine, human milk and cell culture supernatants.
Tested Reactivity	Hu
Tested Application	ELISA
Specificity	There is no detectable cross-reactivity with other relevant proteins.
Target Name	Progranulin
Conjugation	HRP
Conjugation Note	Substrate: TMB and read at 450 nm.
Sensitivity	146 ng/ml
Sample Type	Serum, plasma (heparin, EDTA), saliva, urine, human milk and cell culture supernatants.
Standard Range	312 - 20000 pg/ml
Sample Volume	100 µl

Precision	Intra-Assay CV: 6.8% Inter-Assay CV: 7.7%
Alternate Names	PEPI; Glycoprotein 88; CLN11; GEP; Proepithelin; Granulin E; Granulin D; Granulins; PGRN; Glycoprotein of 88 Kda; Granulin G; Progranulin; PCDGF; Granulin B; Granulin C; Granulin A; GP88; Granulin F

Application Instructions

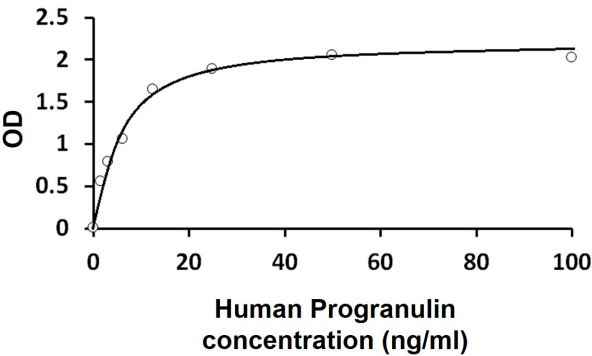
Assay Time	~ 5 hours
------------	-----------

Properties

Form	96 well
Storage instruction	Store the kit at 2-8°C. Keep microplate wells sealed in a dry bag with desiccants. Do not expose test reagents to heat, sun or strong light during storage and usage. Please refer to the product user manual for detail temperatures of the components.
Note	For laboratory research only, not for drug, diagnostic or other use.

Bioinformation

Gene Symbol	GRN
Gene Full Name	granulin
Background	Granulins are a family of secreted, glycosylated peptides that are cleaved from a single precursor protein with 7.5 repeats of a highly conserved 12-cysteine granulin/epithelin motif. The 88 kDa precursor protein, progranulin, is also called proepithelin and PC cell-derived growth factor. Cleavage of the signal peptide produces mature granulin which can be further cleaved into a variety of active, 6 kDa peptides. These smaller cleavage products are named granulin A, granulin B, granulin C, etc. Epithelins 1 and 2 are synonymous with granulins A and B, respectively. Both the peptides and intact granulin protein regulate cell growth. However, different members of the granulin protein family may act as inhibitors, stimulators, or have dual actions on cell growth. Granulin family members are important in normal development, wound healing, and tumorigenesis. [provided by RefSeq, Jul 2008]
Function	Granulins have possible cytokine-like activity. They may play a role in inflammation, wound repair, and tissue remodeling. Granulin-4 promotes proliferation of the epithelial cell line A431 in culture while granulin-3 acts as an antagonist to granulin-4, inhibiting the growth. [UniProt]
Highlight	Related products: Progranulin antibodies ; Progranulin ELISA Kits ; New ELISA data calculation tool: Simplify the ELISA analysis by GainData
PTM	Granulins are disulfide bridged. [UniProt]



ARG81493 Human Progranulin ELISA Kit standard curve image

ARG81493 Human Progranulin ELISA Kit results of a typical standard run with optical density reading at 450 nm.