

ARG81447 Human NBL1 ELISA Kit

Package: 96 wells
Store at: 4°C

Component

Cat. No.	Component Name	Package	Temp
ARG81447-001	Antibody-coated microplate	8 X 12 strips	4°C. Unused strips should be sealed tightly in the air-tight pouch.
ARG81447-002	Standard	2 X 10 ng/vial	4°C
ARG81447-003	Standard/Sample diluent	30 ml (Ready to use)	4°C
ARG81447-004	Antibody conjugate concentrate (100X)	1 vial (100 µl)	4°C
ARG81447-005	Antibody diluent buffer	12 ml (Ready to use)	4°C
ARG81447-006	HRP-Streptavidin concentrate (100X)	1 vial (100 µl)	4°C
ARG81447-007	HRP-Streptavidin diluent buffer	12 ml (Ready to use)	4°C
ARG81447-008	25X Wash buffer	20 ml	4°C
ARG81447-009	TMB substrate	10 ml (Ready to use)	4°C (Protect from light)
ARG81447-010	STOP solution	10 ml (Ready to use)	4°C
ARG81447-011	Plate sealer	4 strips	Room temperature

Summary

Product Description	ARG81447 Human NBL1 ELISA Kit is an Enzyme Immunoassay kit for the quantification of Human NBL1 in serum, plasma (heparin, EDTA) and cell culture supernatants.
Tested Reactivity	Hu
Tested Application	ELISA
Specificity	There is no detectable cross-reactivity with other relevant proteins.
Target Name	NBL1
Conjugation	HRP
Conjugation Note	Substrate: TMB and read at 450 nm.
Sensitivity	62.5 pg/ml
Sample Type	Serum, plasma (heparin, EDTA) and cell culture supernatants.
Standard Range	125 - 8000 pg/ml
Sample Volume	100 µl

Precision	Intra-Assay CV: 6.3% Inter-Assay CV: 6.6%
Alternate Names	NB; DAN; NO3; DAND1; D1S1733E

Application Instructions

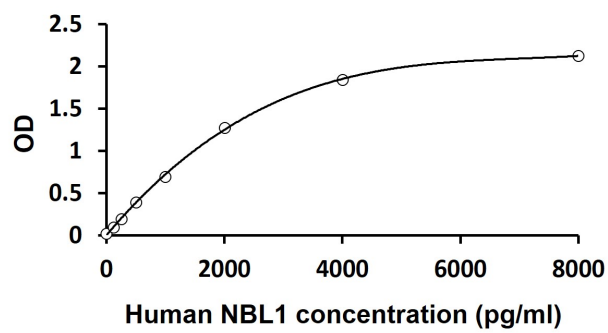
Assay Time	~ 5 hours
------------	-----------

Properties

Form	96 well
Storage instruction	Store the kit at 2-8°C. Keep microplate wells sealed in a dry bag with desiccants. Do not expose test reagents to heat, sun or strong light during storage and usage. Please refer to the product user manual for detail temperatures of the components.
Note	For laboratory research only, not for drug, diagnostic or other use.

Bioinformation

Gene Symbol	NBL1
Gene Full Name	NBL1, DAN family BMP antagonist
Background	This gene product is the founding member of the evolutionarily conserved CAN (Cerberus and DAN) family of proteins, which contain a domain resembling the CTCK (C-terminal cystine knot-like) motif found in a number of signaling molecules. These proteins are secreted, and act as BMP (bone morphogenetic protein) antagonists by binding to BMPs and preventing them from interacting with their receptors. They may thus play an important role during growth and development. Alternatively spliced transcript variants have been identified for this gene. Read-through transcripts between this locus and the upstream mitochondrial inner membrane organizing system 1 gene (GeneID 440574) have been observed. [provided by RefSeq, May 2013]
Function	Possible candidate as a tumor suppressor gene of neuroblastoma. May play an important role in preventing cells from entering the final stage (G1/S) of the transformation process. [UniProt]
Highlight	Related products: NBL1 antibodies ; NBL1 ELISA Kits ; New ELISA data calculation tool: Simplify the ELISA analysis by GainData



ARG81447 Human NBL1 ELISA Kit standard curve image

ARG81447 Human NBL1 ELISA Kit results of a typical standard run with optical density reading at 450 nm.