

ARG81325 Human CD62E / E-Selectin ELISA Kit

Package: 96 wells
Store at: 4°C

Summary

Product Description	ARG81325 Human CD62E / E-Selectin ELISA Kit is an Enzyme Immunoassay kit for the quantification of Human CD62E / E-Selectin in serum, plasma and cell culture supernatant.
Tested Reactivity	Hu
Tested Application	ELISA
Specificity	Recognizes both natural and recombinant Human soluble E-Selectin. No cross reactivity with other Human adhesion molecules.
Target Name	CD62E / E-Selectin
Conjugation	HRP
Conjugation Note	Substrate: TMB and read at 450 nm.
Sensitivity	0.5 ng/ml
Sample Type	Serum, plasma and cell culture supernatants.
Standard Range	1 - 32 ng/ml
Sample Volume	100 µl
Alternate Names	E-selectin; CD62E; ELAM-1; ELAM1; CD antigen CD62E; ELAM; Endothelial leukocyte adhesion molecule 1; Leukocyte-endothelial cell adhesion molecule 2; ESEL; LECAM2; CD62 antigen-like family member E

Application Instructions

Assay Time	~ 2.5 hours
------------	-------------

Properties

Form	96 well
Storage instruction	Store the kit at 2-8°C. Keep microplate wells sealed in a dry bag with desiccants. Do not expose test reagents to heat, sun or strong light during storage and usage. Please refer to the product user manual for detail temperatures of the components.
Note	For laboratory research only, not for drug, diagnostic or other use.

Bioinformation

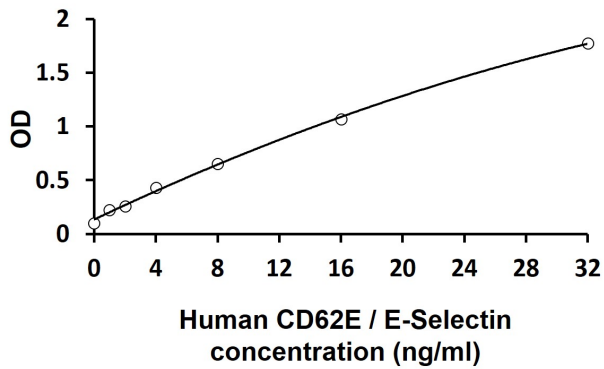
Gene Symbol	SELE
Gene Full Name	selectin E
Background	The protein encoded by this gene is found in cytokine-stimulated endothelial cells and is thought to be responsible for the accumulation of blood leukocytes at sites of inflammation by mediating the adhesion of cells to the vascular lining. It exhibits structural features such as the presence of lectin- and EGF-like domains followed by short consensus repeat (SCR) domains that contain 6 conserved cysteine residues. These proteins are part of the selectin family of cell adhesion molecules. Adhesion molecules participate in the interaction between leukocytes and the endothelium and appear to be involved in the

pathogenesis of atherosclerosis. [provided by RefSeq, Jul 2008]

Function Cell-surface glycoprotein having a role in immunoadhesion. Mediates in the adhesion of blood neutrophils in cytokine-activated endothelium through interaction with PSGL1/SELPLG. May have a role in capillary morphogenesis. [UniProt]

Highlight Related products:
[CD62 antibodies](#); [CD62 ELISA Kits](#);
New ELISA data calculation tool:
[Simplify the ELISA analysis by GainData](#)

Images



ARG81325 Human CD62E / E-Selectin ELISA Kit standard curve image

ARG81325 Human CD62E / E-Selectin ELISA Kit results of a typical standard run with optical density reading at 450 nm.