

ARG81309 Peptide YY ELISA Kit

Package: 96 wells
Store at: 4°C

Summary

Product Description	ARG81309 Peptide YY ELISA Kit is an Enzyme Immunoassay kit for the quantification of Peptide YY in serum and plasma.
Tested Reactivity	Ms, Rat, Dog, Pig
Tested Application	ELISA
Specificity	Cross Reactivity: Peptide YY (3-36) (Dog, Mouse, Pig, Rat), Peptide YY (1-36) (Dog, Mouse, Pig, Rat): 100% Neuropeptide Y (Porcine): 2.4% Peptide YY (1-36) (Human), Peptide YY (3-36) (Human), Neuropeptide Y (Human, Rat, Mouse), Pancreatic Polypeptide (Human), Amylin Amide (Human), Insulin (Human), Glucagon (Human), Substance P: 0%
Target Name	Peptide YY
Conjugation	HRP
Conjugation Note	Substrate: TMB and read at 450 nm.
Sensitivity	0.07 ng/ml
Detection Range	0.07 - 0.64 ng/ml
Sample Type	Serum and plasma
Standard Range	0.01 - 100 ng/ml
Sample Volume	50 µl
Alternate Names	Peptide tyrosine tyrosine; PYY; PYY-I; PYY1; Peptide YY; PYY-II; 3-36

Application Instructions

Assay Time	~ 4 hours
------------	-----------

Properties

Form	96 well
Storage instruction	Store the kit at 2-8°C. Keep microplate wells sealed in a dry bag with desiccants. Do not expose test reagents to heat, sun or strong light during storage and usage. Please refer to the product user manual for detail temperatures of the components.
Note	For laboratory research only, not for drug, diagnostic or other use.

Bioinformation

Gene Symbol	Pyy
Gene Full Name	peptide YY
Background	The protein encoded by this gene is proteolytically processed to release a peptide that inhibits

pancreatic secretion and mobility in the gut. Rare variations in this gene could increase susceptibility to obesity. [provided by RefSeq, Jul 2010]

Function This gut peptide inhibits exocrine pancreatic secretion, has a vasoconstrictory action and inhibits jejunal and colonic mobility. [UniProt]

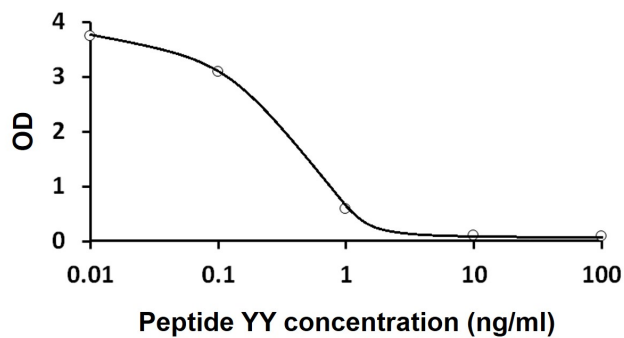
Highlight New ELISA data calculation tool:
[Simplify the ELISA analysis by GainData](#)

Related news:
[Studying obesity and appetite control by quantifying orexigenic and anorexigenic hormones:](#)

Related products:
[Peptide YY antibodies:](#) [Peptide YY ELISA Kits:](#)

PTM The peptide YY form is cleaved at Pro-30 by the prolyl endopeptidase FAP (seprase) activity (in vitro) to generate peptide YY(3-36).

Images



ARG81309 Peptide YY ELISA Kit standard curve image

ARG81309 Peptide YY ELISA Kit results of a typical standard run with optical density reading at 450 nm.