

## ARG81270 Human CD62P / P-Selectin ELISA Kit

Package: 96 wells  
Store at: 4°C

### Summary

Product Description	ARG81270 Human CD62P / P-Selectin ELISA Kit is an Enzyme Immunoassay kit for the quantification of Human CD62P / P-Selectin in serum, plasma or cell culture supernatants.
Tested Reactivity	Hu
Tested Application	ELISA
Target Name	CD62P / P-Selectin
Conjugation	HRP
Conjugation Note	Substrate: TMB and read at 450 nm.
Sensitivity	62 pg/ml
Sample Type	Serum, plasma or cell culture supernatants.
Standard Range	125 - 8000 pg/ml
Sample Volume	100 µl
Alternate Names	PADGEM; CD62; Platelet activation dependent granule-external membrane protein; CD62 antigen-like family member P; GMP140; PSEL; Granule membrane protein 140; CD62P; CD antigen CD62P; Leukocyte-endothelial cell adhesion molecule 3; GRMP; GMP-140; P-selectin; LECAM3

### Application Instructions

Assay Time	~ 3.5 hours
------------	-------------

### Properties

Form	96 well
Storage instruction	Store the kit at 2-8°C. Keep microplate wells sealed in a dry bag with desiccants. Do not expose test reagents to heat, sun or strong light during storage and usage. Please refer to the product user manual for detail temperatures of the components.
Note	For laboratory research only, not for drug, diagnostic or other use.

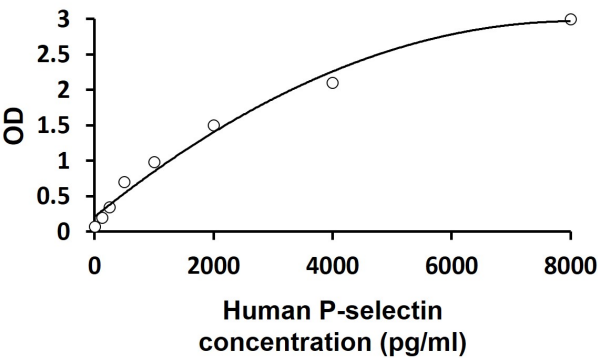
### Bioinformation

Gene Symbol	SELP
Gene Full Name	selectin P (granule membrane protein 140kDa, antigen CD62)
Background	This gene encodes a 140 kDa protein that is stored in the alpha-granules of platelets and Weibel-Palade bodies of endothelial cells. This protein redistributes to the plasma membrane during platelet activation and degranulation and mediates the interaction of activated endothelial cells or platelets with leukocytes. The membrane protein is a calcium-dependent receptor that binds to sialylated forms of Lewis blood group carbohydrate antigens on neutrophils and monocytes. Alternative splice variants may occur but are not well documented. [provided by RefSeq, Jul 2008]

Function	Ca(2+)-dependent receptor for myeloid cells that binds to carbohydrates on neutrophils and monocytes. Mediates the interaction of activated endothelial cells or platelets with leukocytes. The ligand recognized is sialyl-Lewis X. Mediates rapid rolling of leukocyte rolling over vascular surfaces during the initial steps in inflammation through interaction with PSGL1. [UniProt]
Highlight	Related products: <a href="#">CD62 antibodies</a> ; <a href="#">CD62 ELISA Kits</a> ; New ELISA data calculation tool: <a href="#">Simplify the ELISA analysis by GainData</a>

Images

---



ARG81270 Human CD62P / P-Selectin ELISA Kit standard curve image

ARG81270 Human CD62P / P-Selectin ELISA Kit results of a typical standard run with optical density reading at 450 nm.