

ARG80915 Adropin ELISA Kit

Package: 96 wells
Store at: 4°C

Summary

Product Description	ARG80915 Adropin ELISA Kit is an Enzyme Immunoassay kit for the quantification of Adropin in Serum/Plasma extraction, Tissue extraction and CSF extraction.
Tested Reactivity	Hu, Ms, Rat
Tested Application	ELISA
Specificity	Cross-reactivity: Adropin (34-76) (Human, Mouse, Rat) (100%); MCH (Human, Mouse, Rat) (39.4%); GLP-1 (7-36) Amide (Human, Bovine, Canine, Mouse, Ovine, Porcine, Rat) (25.2%); CCK (26-33) (Non-sulfated) (Human, Mouse, Rat) (0%); CRF (Human, Canine, Feline, Mouse, Rat) (0%); AGRP (83-132) Amide (Human) (0%); Apelin-36 (Human) (0%); Ghrelin (Human) (0%)
Target Name	Adropin
Conjugation	HRP
Conjugation Note	Substrate: TMB and read at 450 nm.
Sensitivity	0.4 ng/ml
Detection Range	0.4 - 8.5 ng/ml
Sample Type	Serum/Plasma extraction, Tissue extraction and CSF extraction
Standard Range	0.01 - 100 ng/ml
Sample Volume	50 µl
Alternate Names	Adropin; Energy homeostasis-associated protein; UNQ470; C9orf165

Application Instructions

Assay Time	~ 4 hours
------------	-----------

Properties

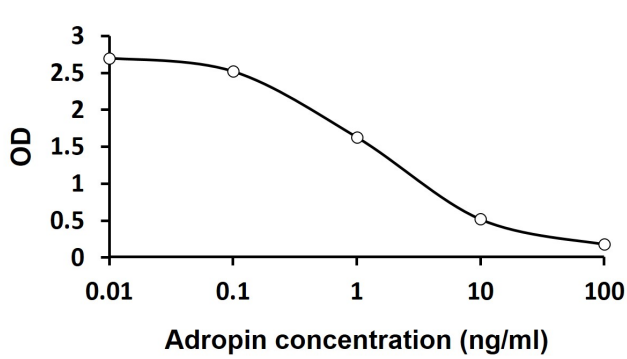
Form	96 well
Storage instruction	Store the kit at 2-8°C. Keep microplate wells sealed in a dry bag with desiccants. Do not expose test reagents to heat, sun or strong light during storage and usage. Please refer to the product user manual for detail temperatures of the components.
Note	For laboratory research only, not for drug, diagnostic or other use.

Bioinformation

Gene Symbol	ENHO
-------------	------

Gene Full Name	energy homeostasis associated
Function	Involved in the regulation of glucose homeostasis and lipid metabolism. [UniProt]
Highlight	Related products: New ELISA data calculation tool: Simplify the ELISA analysis by GainData
Research Area	Cell Biology and Cellular Response kit; Signaling Transduction kit

Images



ARG80915 Adropin ELISA Kit standard curve image

ARG80915 Adropin ELISA Kit results of a typical standard run with optical density reading at 450 nm.