

ARG80904 Human Betacellulin / BTC ELISA kit

Package: 96 wells
Store at: 4°C

Summary

Product Description	ARG80904 Human Betacellulin / BTC ELISA kit is a Enzyme Immunoassay kit for the quantification of Human Betacellulin / BTC in Serum, Plasma, Cell culture supernatants
Tested Reactivity	Hu
Tested Application	ELISA
Specificity	No significant cross-reactivity or interference with EGF, Epigen, Epiregulin, HB-EGF, Heregulin β -1, Prokineticin-2, TGF- α .
Target Name	BTC / Betacellulin
Conjugation	HRP
Conjugation Note	Substrate: TMB and read at 450 nm
Sensitivity	15 pg/ml
Sample Type	Serum, Plasma, Cell culture supernatants
Standard Range	31.25 - 2000 pg/ml
Sample Volume	100 μ l
Precision	CV:
Alternate Names	Probetacellulin; BTC

Application Instructions

Assay Time	4 hours
------------	---------

Properties

Form	96 well
Storage instruction	Store the kit at 2-8°C. Keep microplate wells sealed in a dry bag with desiccants. Do not expose test reagents to heat, sun or strong light during storage and usage. Please refer to the product user manual for detail temperatures of the components.
Note	For laboratory research only, not for drug, diagnostic or other use.

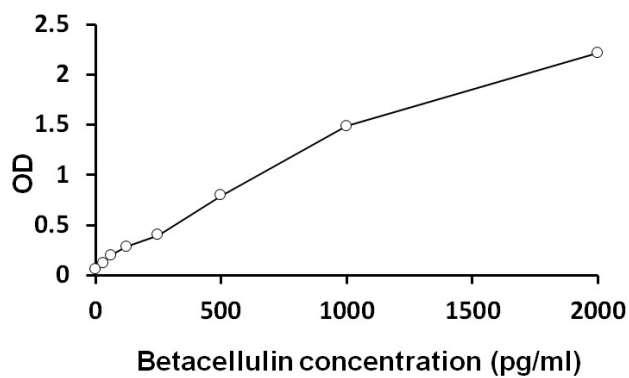
Bioinformation

Gene Symbol	BTC
Gene Full Name	betacellulin
Background	Betacellulin (BTC) is a member of epidermal growth factor (EGF) family, synthesized primarily as transmembrane precursors. The precursor form of BTC are processed to mature molecules by proteolytic events. The mature Betacellulin (BTC) is one of a ligand for the EGFR/ErbB receptor tyrosine kinases, and play roles in cell growth and differentiation. BTC may also play a protective role in acute pancreatitis, whereas increased expression of BTC may contribute to diabetic macular edema. Gene

therapy using combinations of BTC and other pancreas-specific transcription factors may induce islet neogenesis and remediate hyperglycemia in type 1 diabetes. [modified from RefSeq, Apr 2011]

Function	Growth factor that binds to EGFR, ERBB4 and other EGF receptor family members. Potent mitogen for retinal pigment epithelial cells and vascular smooth muscle cells. [UniProt]
Highlight	Related products: Betacellulin antibodies ; Betacellulin ELISA Kits ; New ELISA data calculation tool: Simplify the ELISA analysis by GainData
Research Area	Signaling Transduction kit

Images



ARG80904 Human Betacellulin / BTC ELISA kit standard curve image

ARG80904 Human Betacellulin / BTC ELISA kit results of a typical standard run with optical density reading at 450 nm.