

ARG80806 Bovine milk protein ELISA Kit

Package: 96 wells
Store at: 4°C

Summary

Product Description	ARG80806 Bovine milk protein ELISA Kit is a Enzyme Immunoassay kit for the quantification of Bovine Bovine milk protein in food (extraction, centrifugation, dilution).
Tested Reactivity	Bov
Tested Application	ELISA
Target Name	milk protein
Conjugation	HRP
Conjugation Note	Substrate: TMB and read at 450 nm
Sensitivity	0.05 ppm
Sample Type	Food (extraction, centrifugation, dilution).
Standard Range	0.4 - 10 ppm
Sample Volume	100 µl

Application Instructions

Assay Time	20, 20 min (RT), 20 min (RT/dark)
------------	-----------------------------------

Properties

Form	96 well
Storage instruction	Store the kit at 2-8°C. Keep microplate wells sealed in a dry bag with desiccants. Do not expose test reagents to heat, sun or strong light during storage and usage. Please refer to the product user manual for detail temperatures of the components.
Note	For laboratory research only, not for drug, diagnostic or other use.

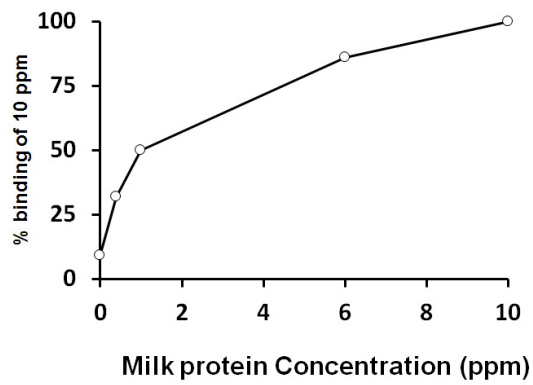
Bioinformation

Gene Full Name	Bovine milk protein
Background	<p>Bovine milk belongs to the most important allergenic food ingredients especially for children. Already very low amounts of bovine milk can cause allergic reactions, which may lead to anaphylactic shock in severe cases. Because of this, milk allergic persons must strictly avoid the consumption of milk or milk containing food. In particular the presence of hidden milk proteins such as in sausage, cookies, convenience food or beverages represent a critical problem for milk allergic persons. According to EU Directive 2003/89/EG the addition of bovine milk has to be labeled. For the detection of bovine milk in foodstuffs, sensitive detection systems are required.</p> <p>Approximately 80% of bovine milk proteins are caseins. β-Lactoglobulin, the major allergen of whey, represents further 10% of the total protein.</p>
Highlight	Related products:

Research Area

Immune System kit

Images



ARG80806 Bovine milk protein ELISA Kit standard curve image

ARG80806 Bovine milk protein ELISA Kit results of a typical standard run with optical density reading at 450nm.