

ARG80790 Casein ELISA Kit

Package: 96 wells
Store at: 4°C

Summary

Product Description	ARG80790 Casein ELISA Kit is a Enzyme Immunoassay kit for the quantification of Casein in food (extraction, dilution).
Tested Application	ELISA
Target Name	Casein
Conjugation	HRP
Conjugation Note	Substrate: TMB and read at 450 nm
Sensitivity	0.04 ppm
Sample Type	Food (extraction, dilution).
Standard Range	0.2 - 6 ppm
Sample Volume	100 µl

Application Instructions

Assay Time	20, 20 min (RT), 20 min (RT/dark)
------------	-----------------------------------

Properties

Form	96 well
Storage instruction	Store the kit at 2-8°C. Keep microplate wells sealed in a dry bag with desiccants. Do not expose test reagents to heat, sun or strong light during storage and usage. Please refer to the product user manual for detail temperatures of the components.
Note	For laboratory research only, not for drug, diagnostic or other use.

Bioinformation

Gene Full Name	Casein
Background	<p>Bovine milk belongs to the most important allergenic food ingredients especially for children. Already very low amounts of bovine milk can cause allergic reactions, which may lead to anaphylactic shock in severe cases. Because of this, milk allergic persons must strictly avoid the consumption of milk or milk containing food. In particular the presence of hidden milk proteins such as in sausage, cookies, convenience food or beverages represent a critical problem for milk allergic persons. According to EU Directive 2003/89/EG the addition of bovine milk has to be labeled. For the detection of bovine milk in foodstuffs, sensitive detection systems are required.</p> <p>Approximately 80% of bovine milk proteins are caseins which are composed of α-, β- and γ-caseins. So these heat-stable allergens represent the main fraction of bovine milk proteins.</p> <p>The Casein ELISA represents a highly sensitive detection system and is particularly capable of the identification and quantification of bovine casein residues in cookies, bread crumbs, sausage, orange juice, wine, soy products and chocolate.</p>

Highlight

Related products:

[Casein antibodies](#); [Casein ELISA Kits](#);

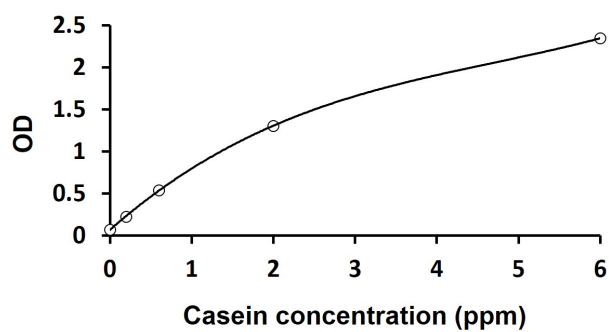
New ELISA data calculation tool:

[Simplify the ELISA analysis by GainData](#)

Research Area

Cell Biology and Cellular Response kit

Images



ARG80790 Casein ELISA Kit standard curve image

The representative standard curve of ARG80790 Casein ELISA Kit. The standard curve is for demonstration only and cannot be used in place of data generations at the time of assay. The standard curve should be generated each time the assay is performed.