

ARG80789 Beta Lactoglobulin ELISA Kit

Package: 96 wells
Store at: 4°C

Summary

Product Description	ARG80789 Beta Lactoglobulin ELISA Kit is a Enzyme Immunoassay kit for the quantification of Beta Lactoglobulin in food (extraction, centrifugation, dilution).
Tested Application	ELISA
Target Name	beta Lactoglobulin
Conjugation	HRP
Conjugation Note	Substrate: TMB and read at 450 nm
Sensitivity	1.5 ppb
Sample Type	Food (extraction, centrifugation, dilution).
Standard Range	10 - 400 ppb
Sample Volume	100 µl
Alternate Names	β-Lactoglobulin

Application Instructions

Assay Time	20, 20 min (RT), 20 min (RT/dark)
------------	-----------------------------------

Properties

Form	96 well
Storage instruction	Store the kit at 2-8°C. Keep microplate wells sealed in a dry bag with desiccants. Do not expose test reagents to heat, sun or strong light during storage and usage. Please refer to the product user manual for detail temperatures of the components.
Note	For laboratory research only, not for drug, diagnostic or other use.

Bioinformation

Gene Symbol	MBLG
Gene Full Name	Milk beta-lactoglobulin protein content
Background	<p>Bovine milk belongs to the most important allergenic food ingredients especially for children. Already very low amounts of bovine milk can cause allergic reactions, which may lead to anaphylactic shock in severe cases. Because of this, milk allergic persons must strictly avoid the consumption of milk or milk containing food. In particular the presence of hidden milk proteins such as in sausage, cookies, convenience food or beverages represent a critical problem for milk allergic persons. According to EU Directive 2003/89/EG the addition of bovine milk has to be labeled. For the detection of bovine milk in foodstuffs sensitive detection systems are required.</p> <p>Approximately 20% of bovine milk proteins are whey proteins. The main fraction of whey proteins consists of the heat-stable allergen β-lactoglobulin.</p>

The β -Lactoglobulin ELISA represents a highly sensitive detection system and is particularly capable of the identification and quantification of bovine milk residues in cookies, cereals, sausage, orange juice, wine, soy products and chocolate.

Highlight

Related products:

[beta Lactoglobulin antibodies;](#) [beta Lactoglobulin ELISA Kits;](#)

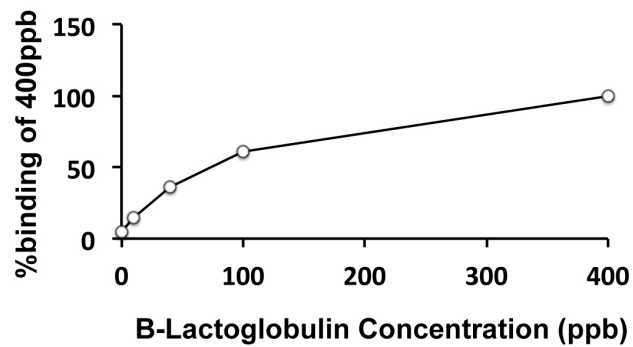
New ELISA data calculation tool:

[Simplify the ELISA analysis by GainData](#)

Research Area

Metabolism kit; Signaling Transduction kit

Images



ARG80789 Beta Lactoglobulin ELISA Kit standard curve example image

The representative standard curve of ARG80789 Beta Lactoglobulin ELISA Kit. The standard curve is for demonstration only and cannot be used in place of data generations at the time of assay. The standard curve should be generated each time the assay is performed.