

ARG80762 Human Serpin E1 / PAI1 ELISA Kit

Package: 96 wells
Store at: 4°C

Summary

Product Description	ARG80762 Human Serpin E1 / PAI1 ELISA Kit is an Enzyme Immunoassay kit for the quantification of Human Serpin E1 / PAI1 in Serum, Plasma (EDTA), Cell culture supernatants.
Tested Reactivity	Hu
Tested Application	ELISA
Specificity	No cross-reacts with human tPa, uPAR, uPA, Vitronectin, Serpin A1, A3, A4, A5, C1, D1, E2, F2, G1
Target Name	PAI1 / SERPINE1
Conjugation	HRP
Sensitivity	24 pg/ml
Sample Type	Serum, Plasma (EDTA), Cell culture supernatants
Standard Range	46.8 - 3000 pg/ml
Sample Volume	100 µl
Precision	less than 10%
Alternate Names	Serpin E1; PLANH1; Endothelial plasminogen activator inhibitor; Plasminogen activator inhibitor 1; PAI; PAI1; PAI-1

Properties

Form	96 well
Storage instruction	Store the kit at 2-8°C. Keep microplate wells sealed in a dry bag with desiccants. Do not expose test reagents to heat, sun or strong light during storage and usage. Please refer to the product user manual for detail temperatures of the components.
Note	For laboratory research only, not for drug, diagnostic or other use.

Bioinformation

Database links	GeneID: 5054 Human Swiss-port # P05121 Human
Gene Symbol	SERPINE1
Gene Full Name	serpin peptidase inhibitor, clade E (nexin, plasminogen activator inhibitor type 1), member 1
Background	Serpin E1 is a member of the serine proteinase inhibitor (serpin) superfamily. This member is the principal inhibitor of tissue plasminogen activator (tPA) and urokinase (uPA), and hence is an inhibitor of fibrinolysis. Defects in this gene are the cause of plasminogen activator inhibitor-1 deficiency (PAI-1 deficiency), and high concentrations of the gene product are associated with thrombophilia. Alternatively spliced transcript variants encoding different isoforms have been found for this gene. [provided by RefSeq, Sep 2009]
Highlight	Related products: Serpin E1 antibodies ; Serpin E1 ELISA Kits ;

New ELISA data calculation tool:
[Simplify the ELISA analysis by GainData](#)

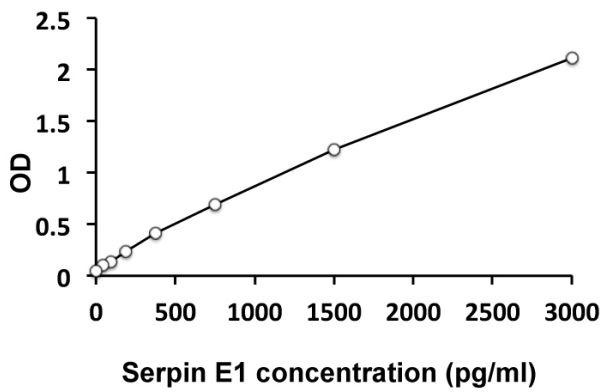
Research Area

Cancer kit; Cell Biology and Cellular Response kit; Metabolism kit

PTM

Inactivated by proteolytic attack of the urokinase-type (u-PA) and the tissue-type (TPA), cleaving the 369-Arg-|-Met-370 bond.

Images



ARG80762 Human Serpin E1 / PAI1 ELISA Kit standard curve image

ARG80762 Human Serpin E1 / PAI1 ELISA Kit results of a typical standard.