

ARG80216 Mouse IgE ELISA Kit

Package: 96 wells
Store at: 4°C

Component

Cat. No.	Component Name	Package	Temp
ARG80216-001	Antibody-coated microplate	8 X 12 strips	4°C. Unused strips should be sealed tightly in the air-tight pouch.
ARG80216-002	Standard (Lyophilized)	3 X 80 ng/vial	4°C
ARG80216-003	Standard diluent buffer	40 ml	4°C
ARG80216-004	Antibody conjugate concentrate	400 µl	4°C
ARG80216-005	Antibody diluent buffer	16 ml	4°C
ARG80216-006	20X Wash buffer	50 ml	4°C
ARG80216-007	TMB substrate	12ml	4°C (Protect from light)
ARG80216-008	STOP solution	12ml	4°C
ARG80216-009	Plate sealer	4 strips	Room temperature

Summary

Product Description	ARG80216 Mouse IgE ELISA Kit is a Enzyme Immunoassay kit for the quantification of Mouse Mouse IgE in Serum, Plasma, Cell culture supernatants
Tested Reactivity	Ms
Tested Application	ELISA
Specificity	No significant cross-reactivity or interference with Mouse IL-1,2,3,5,6,8,10,IFN, TNF, human IgE, rat IgE
Target Name	IgE
Conjugation	HRP
Conjugation Note	Substrate: TMB and read at 450 nm
Sensitivity	0.8 ng/ml
Sample Type	Serum, Plasma, Cell culture supernatants
Standard Range	1.56 - 100 ng/ml
Sample Volume	100 µl
Precision	CV: less than 10%
Alternate Names	Immunoglobulin E

Application Instructions

Assay Time 4 hours

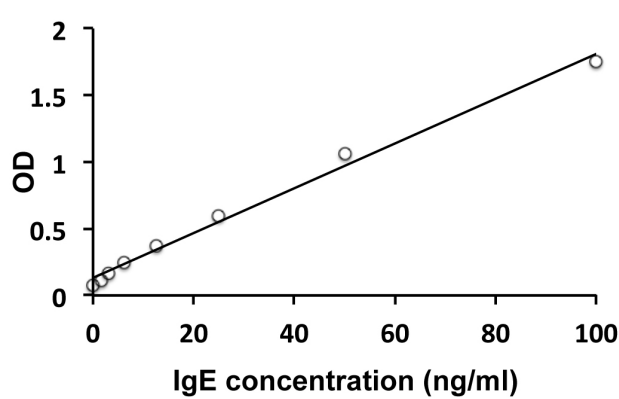
Properties

Form	96 well
Storage instruction	Store the kit at 2-8°C. Keep microplate wells sealed in a dry bag with desiccants. Do not expose test reagents to heat, sun or strong light during storage and usage. Please refer to the product user manual for detail temperatures of the components.
Note	For laboratory research only, not for drug, diagnostic or other use.

Bioinformation

Background	Immunoglobulin E (IgE) is a 180 kDa soluble protein serving as an antigen-specific unit of mast cell effector mechanisms. IgE has the lowest serum concentration of all immunoglobulins (approximately 0.5 mg/l) in healthy individuals, but upon allergen challenge its concentration in blood increases dramatically. Although biological survival of free IgE is very short (T1/2 = 2 days), it is stabilized after binding to its high affinity receptor. Unlike IgM- IgG- and IgA-committed B cells, IgE-switched B cells do not undergo clonal expansion.
Highlight	Related products: IgE ELISA Kits ; New ELISA data calculation tool: Simplify the ELISA analysis by GainData
Research Area	Immune System kit

Images



ARG80216 Mouse IgE ELISA Kit ELISA Kit standard curve image

ARG80216 Mouse IgE ELISA Kit ELISA Kit results of a typical standard run with optical density reading at 450nm.