

ARG80209 Mouse MDC ELISA Kit

Package: 96 wells
Store at: 4°C

Component

Cat. No.	Component Name	Package	Temp
ARG80209-001	Antibody-coated microplate	8 X 12 strips	4°C. Unused strips should be sealed tightly in the air-tight pouch.
ARG80209-002	Standard (Lyophilized)	3 X 1 ng/vial	4°C
ARG80209-003	Standard diluent buffer	20 ml	4°C
ARG80209-004	Antibody conjugate concentrate	400 µl	4°C
ARG80209-005	Antibody diluent buffer	16 ml	4°C
ARG80209-006	HRP-Streptavidin concentrate	400 µl	4°C (Protect from light)
ARG80209-007	HRP-Streptavidin diluent buffer	16 ml	4°C
ARG80209-008	20X Wash buffer	50 ml	4°C
ARG80209-009	TMB substrate	12ml	4°C (Protect from light)
ARG80209-010	STOP solution	12ml	4°C
ARG80209-011	Plate sealer	4 strips	Room temperature

Summary

Product Description	ARG80209 Mouse MDC ELISA Kit is an Enzyme Immunoassay kit for the quantification of Mouse MDC in Serum, Plasma, Cell culture supernatants.
Tested Reactivity	Ms
Tested Application	ELISA
Specificity	No significant cross-reactivity or interference with Mouse C-10,CTACK,Eotaxin,Exodus-2,KC, JE,MCP-2,,MCP-3,MIP-1 alpha, RANTES
Target Name	CCL22 / MDC
Conjugation	HRP
Conjugation Note	Substrate: TMB and read at 450 nm
Sensitivity	0.78 pg/ml
Sample Type	Serum, Plasma, Cell culture supernatants
Standard Range	1.56 - 100 pg/ml

Sample Volume	100 µl
Precision	CV: less than 10%
Alternate Names	CC chemokine STCP-1; Stimulated T-cell chemotactic protein 1; 3-69; Macrophage-derived chemokine; MDC; DC/B-CK; SCYA22; Small-inducible cytokine A22; ABCD-1; 7-69; 1-69; A-152E5.1; STCP-1; 5-69; C-C motif chemokine 22

Application Instructions

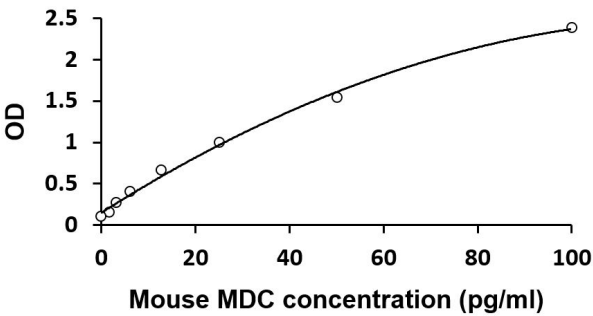
Assay Time	4 hours
------------	---------

Properties

Form	96 well
Storage instruction	Store the kit at 2-8°C. Keep microplate wells sealed in a dry bag with desiccants. Do not expose test reagents to heat, sun or strong light during storage and usage. Please refer to the product user manual for detail temperatures of the components.
Note	For laboratory research only, not for drug, diagnostic or other use.

Bioinformation

Database links	GeneID: 20299 Mouse Swiss-port # O88430 Mouse
Gene Symbol	Ccl22
Gene Full Name	chemokine (C-C motif) ligand 22
Background	<p>This gene is one of several Cys-Cys (CC) cytokine genes clustered on the q arm of chromosome 16. Cytokines are a family of secreted proteins involved in immunoregulatory and inflammatory processes. The CC cytokines are proteins characterized by two adjacent cysteines. The cytokine encoded by this gene displays chemotactic activity for monocytes, dendritic cells, natural killer cells and for chronically activated T lymphocytes. It also displays a mild activity for primary activated T lymphocytes and has no chemoattractant activity for neutrophils, eosinophils and resting T lymphocytes. The product of this gene binds to chemokine receptor CCR4. This chemokine may play a role in the trafficking of activated T lymphocytes to inflammatory sites and other aspects of activated T lymphocyte physiology. [provided by RefSeq]</p>
Highlight	<p>Related products: CCL22 antibodies; CCL22 ELISA Kits; New ELISA data calculation tool: Simplify the ELISA analysis by GainData</p>
Research Area	Immune System kit
PTM	The N-terminal processed forms MDC(3-69), MDC(5-69) and MDC(7-69) are produced by proteolytic cleavage after secretion from monocyte derived dendrocytes.



ARG80209 Mouse MDC ELISA Kit standard curve image

ARG80209 Mouse MDC ELISA Kit results of a typical standard run with optical density reading at 450 nm.