

## ARG80186 Human Neuroserpin ELISA Kit

Package: 96 wells  
Store at: 4°C

### Component

Cat. No.	Component Name	Package	Temp
ARG80186-001	Antibody-coated microplate	8 X 12 strips	4°C. Unused strips should be sealed tightly in the air-tight pouch.
ARG80186-002	Standard (Lyophilized)	3 X 4 ng/vial	4°C
ARG80186-003	Standard diluent buffer	20 ml	4°C
ARG80186-004	Antibody conjugate concentrate	400 µl	4°C
ARG80186-005	Antibody diluent buffer	16 ml	4°C
ARG80186-006	HRP-Streptavidin concentrate	400 µl	4°C (Protect from light)
ARG80186-007	HRP-Streptavidin diluent buffer	16 ml	4°C
ARG80186-008	20X Wash buffer	50 ml	4°C
ARG80186-009	TMB substrate	12ml	4°C (Protect from light)
ARG80186-010	STOP solution	12ml	4°C
ARG80186-011	Plate sealer	4 strips	Room temperature

### Summary

Product Description	ARG80186 Human Neuroserpin ELISA Kit is an Enzyme Immunoassay kit for the quantification of Human Neuroserpin in Serum, Plasma, Cell culture supernatants.
Tested Reactivity	Hu
Tested Application	ELISA
Specificity	No significant cross-reactivity or interference with Human IL-2,3,4,5,6,7,9,10,12, IFN- gamma, TNF-alpha mouse neuroserpin
Target Name	Neuroserpin
Conjugation	HRP
Conjugation Note	Substrate: TMB and read at 450 nm
Sensitivity	30 pg/ml
Sample Type	Serum, Plasma, Cell culture supernatants
Standard Range	62.5 - 4000 pg/ml

Sample Volume	100 µl
Precision	CV: less than 10%
Alternate Names	Peptidase inhibitor 12; neuroserpin; Neuroserpin; Serpin I1; PI12; PI-12

## Application Instructions

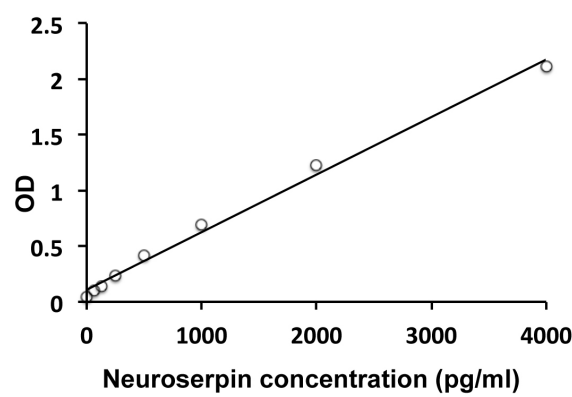
Assay Time	4 hours
------------	---------

## Properties

Form	96 well
Storage instruction	Store the kit at 2-8°C. Keep microplate wells sealed in a dry bag with desiccants. Do not expose test reagents to heat, sun or strong light during storage and usage. Please refer to the product user manual for detail temperatures of the components.
Note	For laboratory research only, not for drug, diagnostic or other use.

## Bioinformation

Database links	<a href="#">GeneID: 5274 Human</a> <a href="#">Swiss-port # Q99574 Human</a>
Gene Symbol	SERPINI1
Gene Full Name	serpin peptidase inhibitor, clade I (neuroserpin), member 1
Background	<p>Neuroserpin is an inhibitory serpin that is expressed predominantly in central nervous system. Although the physiological target of neuroserpin is still unclear, cumulative evidence suggest that it plays an important role in controlling proteolytic degradation of extracellular matrix (ECM) during synaptogenesis and the subsequent development of neuronal plasticity. In the adult brain, neuroserpin is secreted from the growth cones of neurons in areas where synaptic changes are associated with learning and memory, i.e. cerebral cortex, hippocampus, and amygdala. The neuroprotective role of neuroserpin has been demonstrated in transgenic mice lacking neuroserpin expression. The deficiency of neuroserpin in these mice was associated with motor neuron disease characterized by axonal degradation. In humans, defects in neuroserpin, caused by point mutations in the neuroserpin gene, underlie a hereditary disorder called the familial encephalopathy with neuroserpin inclusion bodies (FENIB). Recombinant human neuroserpin is a 44.6 kDa non-glycosylated protein containing 394 amino-acid residues.</p>
Highlight	<p>Related products:  <a href="#">Neuroserpin antibodies</a>; <a href="#">Neuroserpin ELISA Kits</a>;  New ELISA data calculation tool:  <a href="#">Simplify the ELISA analysis by GainData</a></p>
Research Area	Neuroscience kit



ARG80186 Human Neuroserpin ELISA Kit standard curve image

ARG80186 Human Neuroserpin ELISA Kit results of a typical standard run with optical density reading at 450 nm.