

ARG80165 Human IL25 / IL17E ELISA Kit

Package: 96 wells
Store at: 4°C

Component

Cat. No.	Component Name	Package	Temp
ARG80165-001	Antibody-coated microplate	8 X 12 strips	4°C. Unused strips should be sealed tightly in the air-tight pouch.
ARG80165-002	Standard (Lyophilized)	3 X 2 ng/vial	4°C
ARG80165-003	Standard diluent buffer	20 ml	4°C
ARG80165-004	Antibody conjugate concentrate	400 µl	4°C
ARG80165-005	Antibody diluent buffer	16 ml	4°C
ARG80165-006	HRP-Streptavidin concentrate	400 µl	4°C (Protect from light)
ARG80165-007	HRP-Streptavidin diluent buffer	16 ml	4°C
ARG80165-008	20X Wash buffer	50 ml	4°C
ARG80165-009	TMB substrate	12ml	4°C (Protect from light)
ARG80165-010	STOP solution	12ml	4°C
ARG80165-011	Plate sealer	4 strips	Room temperature

Summary

Product Description	ARG80165 Human IL25 / IL17E ELISA Kit is an Enzyme Immunoassay kit for the quantification of Human IL25 / IL17E in serum, plasma and cell culture supernatants.
Tested Reactivity	Hu
Tested Application	ELISA
Specificity	No significant cross-reactivity or interference with Human IFN- gamma, IL-8(72a.a), IL-8(77a.a), IL-10, IL-12, IL-12p40, IL-17A, IL-17D, IL- 17F mouse IL-17A, IL-17F
Target Name	IL25 / IL17E
Conjugation	HRP
Conjugation Note	Substrate: TMB and read at 450 nm
Sensitivity	15 pg/ml
Sample Type	Serum, plasma and cell culture supernatants.
Standard Range	31.25 - 2000 pg/ml

Sample Volume	100 µl
Precision	CV: less than 10%
Alternate Names	IL17E; Interleukin-17E; IL-25; Interleukin-25; IL-17E

Application Instructions

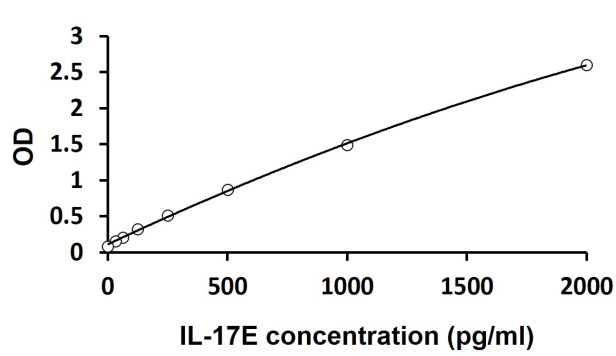
Assay Time	4 hours
------------	---------

Properties

Form	96 well
Storage instruction	Store the kit at 2-8°C. Keep microplate wells sealed in a dry bag with desiccants. Do not expose test reagents to heat, sun or strong light during storage and usage. Please refer to the product user manual for detail temperatures of the components.
Note	For laboratory research only, not for drug, diagnostic or other use.

Bioinformation

Database links	GeneID: 64806 Human Swiss-port # Q9H293 Human
Gene Symbol	IL25
Gene Full Name	interleukin 25
Background	The protein encoded by this gene is a cytokine that shares the sequence similarity with IL17. This cytokine can induce NF-kappaB activation, and stimulate the production of IL8. Both this cytokine and IL17B are ligands for the cytokine receptor IL17BR. Studies of the similar gene in mice suggested that this cytokine may be a proinflammatory cytokine favoring Th2-type immune response. Two alternatively spliced transcript variants of this gene encoding distinct isoforms have been reported. [provided by RefSeq]
Highlight	Related products: IL17E ELISA Kits: New ELISA data calculation tool: Simplify the ELISA analysis by GainData
Research Area	Immune System kit



ARG80165 Human IL25 / IL17E ELISA Kit standard curve image

ARG80165 Human IL25 / IL17E ELISA Kit results of a typical standard run with optical density reading at 450 nm.