

ARG70476 Human CCL3 / MIP1 alpha recombinant protein (Active) (His-Tagged, N-ter)

Package: 100 µg, 20 µg
Store at: -20°C

Summary

Product Description	E. coli expressed, His-Tagged (N-ter)Active Human CCL3 / MIP1 alpha recombinant protein
Tested Application	SDS-PAGE
Target Name	CCL3 / MIP1 alpha
Species	Human
A.A. Sequence	Ala27 - Ala92
Expression System	E. coli
Activity	Active
Activity Note	Measure by its ability to chemoattract human PBMC using a concentration range of 5 -50 ng/mL.
Alternate Names	CCL3; C-C Motif Chemokine Ligand 3; G0S19-1; MIP-1-Alpha; LD78ALPHA; SCYA3; Small Inducible Cytokine A3 (Homologous To Mouse Mip-1a); Macrophage Inflammatory Protein 1-Alpha; Tonsillar Lymphocyte LD78 Alpha Protein; G0/G1 Switch Regulatory Protein 19-1; C-C Motif Chemokine; PAT 464.1; SIS-Beta; MIP1A; LD78; SCI; Macrophage Inflammatory Protein 1 Alpha; Chemokine (C-C Motif) Ligand; Small-Inducible Cytokine A3; MIP-1-ALPHA

Properties

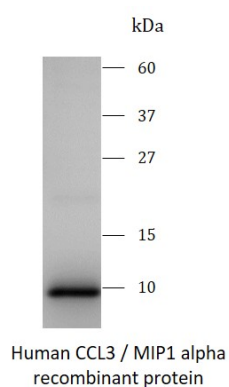
Form	Powder
Purification Note	Endotoxin level is less than 0.1 EU/µg of the protein, as determined by the LAL test.
Purity	> 95% (by SDS-PAGE)
Buffer	PBS (pH 8.0)
Reconstitution	It is recommended to reconstitute the lyophilized protein in sterile water to a concentration not < 200 µg/ml and incubate the stock solution for at least 20 min at room temperature to make sure the protein is dissolved completely.
Storage instruction	For long term, lyophilized protein should be stored at -20°C or -80°C. After reconstitution, aliquot and store at -20°C or -80°C for up to one month. Storage in frost free freezers is not recommended. Avoid repeated freeze/thaw cycles. Suggest spin the vial prior to opening.
Note	For laboratory research only, not for drug, diagnostic or other use.

Bioinformation

Gene Symbol	CCL3
Gene Full Name	C-C Motif Chemokine Ligand 3
Background	This locus represents a small inducible cytokine. The encoded protein, also known as macrophage inflammatory protein 1 alpha, plays a role in inflammatory responses through binding to the receptors CCR1, CCR4 and CCR5. Polymorphisms at this locus may be associated with both resistance and susceptibility to infection by human immunodeficiency virus type 1

Function	Monokine with inflammatory and chemokinetic properties. Binds to CCR1, CCR4 and CCR5. One of the major HIV-suppressive factors produced by CD8+ T-cells. Recombinant MIP-1-alpha induces a dose-dependent inhibition of different strains of HIV-1, HIV-2, and simian immunodeficiency virus (SIV).
PTM	Disulfide bond
Cellular Localization	Secreted

Images



ARG70476 Human CCL3 / MIP1 alpha recombinant protein (Active) (His-Tagged, N-ter) SDS-PAGE image

SDS-PAGE analysis of ARG70476 Human CCL3 / MIP1 alpha recombinant protein (Active) (His-Tagged, N-ter)
