

ARG70462

Human Galectin 8 recombinant protein (Active) (His-tagged, N-ter)

Package: 100 µg, 20 µg

Store at: -20°C

Summary

| | |
|---------------------|--|
| Product Description | E. coli expressed, His-tagged (N-ter) Active Human Galectin 8 recombinant protein |
| Tested Application | SDS-PAGE |
| Target Name | Galectin 8 |
| Species | Human |
| A.A. Sequence | Met2 - Trp317 |
| Expression System | E. coli |
| Activity | Active |
| Activity Note | Determined by its ability to agglutinate human red blood cells. The ED50 for this effect is < 8 µg/mL. |
| Alternate Names | LGALS8; Galectin 8; PCTA-1; Lectin, Galactoside-Binding, Soluble, 8; Prostate Carcinoma Tumor Antigen 1 Po66 Carbohydrate-Binding Protein; Galectin-8; Po66-CBP; Gal-8 |

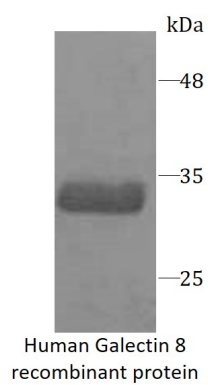
Properties

| | |
|---------------------|---|
| Form | Powder |
| Purification Note | Endotoxin level is less than 0.1 EU/µg of the protein, as determined by the LAL test. |
| Purity | > 98% (by SDS-PAGE) |
| Buffer | PBS (pH 7.4) |
| Reconstitution | It is recommended to reconstitute the lyophilized protein in sterile water to a concentration not less than 200 µg/mL and incubate the stock solution for at least 20 min at room temperature to make sure the protein is dissolved completely. |
| Storage instruction | For long term, lyophilized protein should be stored at -20°C or -80°C. After reconstitution, aliquot and store at -20°C or -80°C for up to one month. Storage in frost free freezers is not recommended. Avoid repeated freeze/thaw cycles. Suggest spin the vial prior to opening. |
| Note | For laboratory research only, not for drug, diagnostic or other use. |

Bioinformation

| | |
|----------------|---|
| Gene Symbol | LGALS8 |
| Gene Full Name | Galectin 8 |
| Background | This gene encodes a member of the galectin family. Galectins are beta-galactoside-binding animal lectins with conserved carbohydrate recognition domains. The galectins have been implicated in many essential functions including development, differentiation, cell-cell adhesion, cell-matrix interaction, growth regulation, apoptosis, and RNA splicing. This gene is widely expressed in tumoral tissues and seems to be involved in integrin-like cell interactions. Alternatively spliced transcript variants encoding different isoforms have been identified. |
| Function | Beta-galactoside-binding lectin that acts as a sensor of membrane damage caused by infection and restricts the proliferation of infecting pathogens by targeting them for autophagy. |

Images



ARG70462 Human Galectin 8 recombinant protein (Active) (His-tagged, N-ter) SDS-PAGE image

SDS-PAGE analysis of ARG70462 Human Galectin 8 recombinant protein (Active) (His-tagged, N-ter)