

## ARG70150 Human EpCAM recombinant protein (Active) (His-tagged, C-ter)

Package: 100 µg, 20 µg  
Store at: -20°C

### Summary

Product Description	E. coli expressed, His-tagged (C-ter) Active Human EpCAM recombinant protein
Tested Application	SDS-PAGE
Target Name	EpCAM
Species	Human
A.A. Sequence	Gln24 - Lys265
Expression System	E. coli
Activity	Active
Activity Note	Determined by the ability of the immobilized protein to support the adhesion of the 3T3 cells. The ED50 for this effect is 0.2-1.7 ng/mL.
Alternate Names	MIC18; EGP; Tumor-associated calcium signal transducer 1; Epithelial glycoprotein 314; KSA; Ep-CAM; Epithelial cell surface antigen; Adenocarcinoma-associated antigen; HNPCC8; Cell surface glycoprotein Trop-1; EGP40; TACSTD1; KS1/4; hEGP314; Major gastrointestinal tumor-associated protein GA733-2; M4S1; MK-1; Epithelial glycoprotein; KS 1/4 antigen; ESA; DIAR5; EGP314; Epithelial cell adhesion molecule; EGP-2; TROP1; CD antigen CD326

### Properties

Form	Powder
Purification Note	Endotoxin level is less than 0.1 EU/µg of the protein, as determined by the LAL test.
Purity	> 95% (by SDS-PAGE)
Buffer	PBS (pH 8.0)
Reconstitution	It is recommended to reconstitute the lyophilized protein in sterile water to a concentration not less than 200 µg/mL and incubate the stock solution for at least 20 min at room temperature to make sure the protein is dissolved completely.
Storage instruction	For long term, lyophilized protein should be stored at -20°C or -80°C. After reconstitution, aliquot and store at -20°C or -80°C for up to one month. Storage in frost free freezers is not recommended. Avoid repeated freeze/thaw cycles. Suggest spin the vial prior to opening.
Note	For laboratory research only, not for drug, diagnostic or other use.

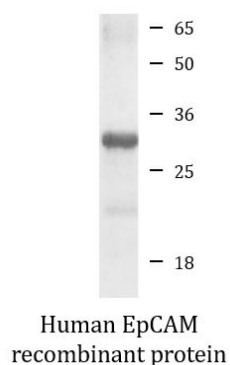
### Bioinformation

Gene Symbol	EPCAM
Gene Full Name	epithelial cell adhesion molecule
Background	This gene encodes a carcinoma-associated antigen and is a member of a family that includes at least two type I membrane proteins. This antigen is expressed on most normal epithelial cells and gastrointestinal carcinomas and functions as a homotypic calcium-independent cell adhesion molecule. The antigen is being used as a target for immunotherapy treatment of human carcinomas. Mutations in this gene result in congenital tufting enteropathy. [provided by RefSeq, Dec 2008]

Function	May act as a physical homophilic interaction molecule between intestinal epithelial cells (IECs) and intraepithelial lymphocytes (IELs) at the mucosal epithelium for providing immunological barrier as a first line of defense against mucosal infection. Plays a role in embryonic stem cells proliferation and differentiation. Up-regulates the expression of FABP5, MYC and cyclins A and E. [UniProt]
PTM	Hyperglycosylated in carcinoma tissue as compared with autologous normal epithelia. Glycosylation at Asn-198 is crucial for protein stability. [UniProt]
Cellular Localization	Lateral cell membrane; Single-pass type I membrane protein. Cell junction, tight junction. Note=Colocalizes with CLDN7 at the lateral cell membrane and tight junction. [UniProt]

## Images

---



ARG70150 Human EpCAM recombinant protein (Active) (His-tagged, C-ter) SDS-PAGE image

SDS-PAGE analysis of ARG70150 Human EpCAM recombinant protein (Active) (His-tagged, C-ter).