

ARG70146 Human Galectin 1 recombinant protein (Active) (His-tagged, N-ter)

Package: 100 µg, 20 µg
Store at: -20°C

Summary

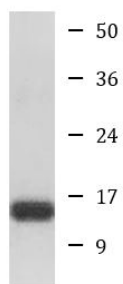
Product Description	E. coli expressed, His-tagged (N-ter) Active Human Galectin 1 recombinant protein
Tested Application	SDS-PAGE
Target Name	Galectin 1
Species	Human
A.A. Sequence	Ala2 - Asp135
Expression System	E. coli
Activity	Active
Activity Note	Determined by its ability to agglutinate human red blood cells. The ED50 for this effect is < 2 µg/mL.
Alternate Names	HBL; Gal-1; GAL1; HPL; Lectin galactoside-binding soluble 1; Galectin-1; 14 kDa laminin-binding protein; Lactose-binding lectin 1; GBP; Beta-galactoside-binding lectin L-14-I; Putative MAPK-activating protein PM12; 14 kDa lectin; Galaptin; S-Lac lectin 1; HLBP14

Properties

Form	Powder
Purification Note	Endotoxin level is less than 0.1 EU/µg of the protein, as determined by the LAL test.
Purity	> 98% (by SDS-PAGE)
Buffer	PBS (pH 7.4)
Reconstitution	It is recommended to reconstitute the lyophilized protein in sterile water to a concentration not less than 200 µg/mL and incubate the stock solution for at least 20 min at room temperature to make sure the protein is dissolved completely.
Storage instruction	For long term, lyophilized protein should be stored at -20°C or -80°C. After reconstitution, aliquot and store at -20°C or -80°C for up to one month. Storage in frost free freezers is not recommended. Avoid repeated freeze/thaw cycles. Suggest spin the vial prior to opening.
Note	For laboratory research only, not for drug, diagnostic or other use.

Bioinformation

Gene Symbol	LGALS1
Gene Full Name	lectin, galactoside-binding, soluble, 1
Background	The galectins are a family of beta-galactoside-binding proteins implicated in modulating cell-cell and cell-matrix interactions. This gene product may act as an autocrine negative growth factor that regulates cell proliferation. [provided by RefSeq, Jul 2008]
Function	May regulate apoptosis, cell proliferation and cell differentiation. Binds beta-galactoside and a wide array of complex carbohydrates. Inhibits CD45 protein phosphatase activity and therefore the dephosphorylation of Lyn kinase. Strong inducer of T-cell apoptosis. [UniProt]
Cellular Localization	Secreted, extracellular space, extracellular matrix. [UniProt]



Human Galectin 1
recombinant protein

ARG70146 Human Galectin 1 recombinant protein (Active) (His-tagged, N-ter) SDS-PAGE image

SDS-PAGE analysis of ARG70146 Human Galectin 1 recombinant protein (Active) (His-tagged, N-ter).