

## ARG70037 Human GM-CSF recombinant protein (Active) (His-tagged, N-ter)

Package: 100 µg, 20 µg  
Store at: -20°C

### Summary

Product Description	E. coli expressed, His-tagged (N-ter) Active Human GM-CSF recombinant protein
Tested Application	SDS-PAGE
Target Name	GM-CSF
Species	Human
A.A. Sequence	Ala18 - Glu144
Expression System	E. coli
Activity	Active
Alternate Names	GM-CSF; Granulocyte-macrophage colony-stimulating factor; CSF; GMCSF; Molgramostin; Colony-stimulating factor; Sargramostim

### Properties

Form	Powder
Purification Note	Endotoxin level is less than 0.1 EU/µg of the protein, as determined by the LAL test.
Purity	> 98% (by SDS-PAGE)
Buffer	PBS (pH 8.0)
Reconstitution	It is recommended to reconstitute the lyophilized protein in sterile water to a concentration not less than 200 µg/mL and incubate the stock solution for at least 20 min at room temperature to make sure the protein is dissolved completely.
Storage instruction	For long term, lyophilized protein should be stored at -20°C or -80°C. After reconstitution, aliquot and store at -20°C or -80°C for up to one month. Storage in frost free freezers is not recommended. Avoid repeated freeze/thaw cycles. Suggest spin the vial prior to opening.
Note	For laboratory research only, not for drug, diagnostic or other use.

### Bioinformation

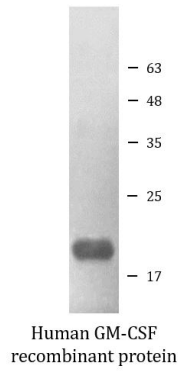
Gene Symbol	CSF2
Gene Full Name	colony stimulating factor 2 (granulocyte-macrophage)
Background	The protein encoded by this gene is a cytokine that controls the production, differentiation, and function of granulocytes and macrophages. The active form of the protein is found extracellularly as a homodimer. This gene has been localized to a cluster of related genes at chromosome region 5q31, which is known to be associated with interstitial deletions in the 5q- syndrome and acute myelogenous leukemia. Other genes in the cluster include those encoding interleukins 4, 5, and 13. [provided by RefSeq, Jul 2008]
Function	Cytokine that stimulates the growth and differentiation of hematopoietic precursor cells from various lineages, including granulocytes, macrophages, eosinophils and erythrocytes. [UniProt]
Highlight	Related products: <a href="#">GM-CSF antibodies</a> ; <a href="#">GM-CSF ELISA Kits</a> ; <a href="#">GM-CSF Duos / Panels</a> ; <a href="#">GM-CSF recombinant proteins</a> ; Related news:

Cellular Localization

Secreted. [UniProt]

## Images

---



ARG70037 Human GM-CSF recombinant protein (Active) (His-tagged, N-ter) SDS-PAGE image

SDS-PAGE analysis of ARG70037 Human GM-CSF recombinant protein (Active) (His-tagged, N-ter).