

ARG67257 anti-GSDMD (cleaved) antibody

Package: 100 µl
Store at: -20°C

Summary

Product Description	Rabbit Monoclonal antibody recognizes GSDMD (cleaved)
Tested Reactivity	Hu, Ms
Predict Reactivity	Rat
Tested Application	ICC/IF, WB
Specificity	ARG67257 detects endogenous levels of Cleaved N-terminal GSDMD.
Host	Rabbit
Clonality	Monoclonal
Isotype	IgG, Kappa
Target Name	GSDMD (cleaved)
Species	Human
Conjugation	Un-conjugated
Alternate Names	GSDMD; Gasdermin D; GSDMDC1; DF5L; Gasdermin Domain-Containing Protein 1; Gasdermin Domain Containing 1; Gasdermin-D; FLJ12150; DFNA5L ; FKSG10

Application Instructions

Application table	Application	Dilution
	ICC/IF	1:200-1:1000
	WB	1:2000-1:10000
Application Note	* The dilutions indicate recommended starting dilutions and the optimal dilutions or concentrations should be determined by the scientist.	
Observed Size	53, 36 kDa	

Properties

Form	Liquid
Purification	Protein A affinity purified
Buffer	PBS, 0.05% Proclin 300, 50% Glycerol and 0.05% BSA.
Preservative	0.05% Proclin 300
Stabilizer	50% Glycerol and 0.05% BSA
Storage instruction	For continuous use, store undiluted antibody at 2-8°C for up to a week. For long-term storage, aliquot and store at -20°C or below. Storage in frost free freezers is not recommended. Avoid repeated freeze/thaw cycles. Suggest spin the vial prior to opening. The antibody solution should be gently mixed before use.

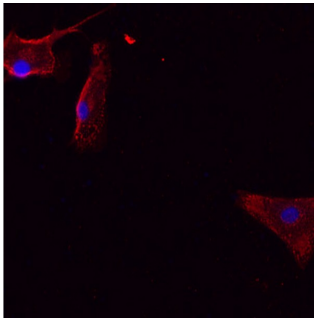
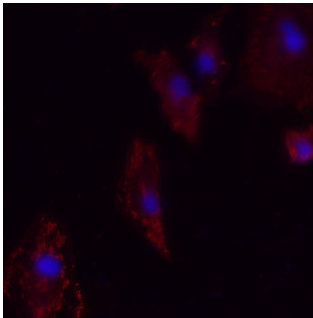
Note

For laboratory research only, not for drug, diagnostic or other use.

Bioinformation

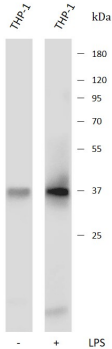
Gene Symbol	GSDMD
Gene Full Name	Gasdermin D
Background	Gasdermin D is a member of the gasdermin family. Members of this family appear to play a role in regulation of epithelial proliferation. Gasdermin D has been suggested to act as a tumor suppressor. Alternatively spliced transcript variants have been described. [provided by RefSeq, Oct 2009]
Function	Does not bind to unphosphorylated phosphatidylinositol, phosphatidylethanolamine nor phosphatidylcholine. [Uniprot]
Calculated Mw	53 kDa
PTM	Glycoprotein, Lipoprotein, Palmitate, Phosphoprotein, Ubl conjugation. [Uniprot]
Cellular Localization	Cell membrane, Cytoplasm, Inflammasome, Membrane, Mitochondrion, Nucleus, Secreted. [Uniprot]

Images



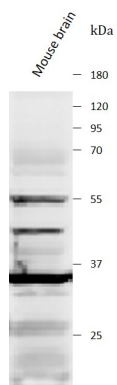
ARG672573 anti-GSDMD (cleaved) antibody ICC/IF image

Immunofluorescence: Un-treated A549 (left) and UV treated A549 (right) stained with ARG672573 anti-GSDMD (cleaved) antibody at 1:200 dilution.



ARG672573 anti-GSDMD (cleaved) antibody WB image

Western blot: Un-treated THP-1 (left) and LPS treated THP-1 (right) stained with ARG672573 anti-GSDMD (cleaved) antibody at.



ARG672573 anti-GSDMD (cleaved) antibody WB image

Western blot: Mouse brain stained with ARG672573 anti-GSDMD (cleaved) antibody at 1:200 dilution.