

## ARG67216 anti-Mesp1 antibody

Package: 100 µg  
Store at: -20°C

### Summary

Product Description	Rabbit Polyclonal antibody recognizes Mesp1
Tested Reactivity	Hu
Tested Application	IHC-Fr, WB
Host	Rabbit
Clonality	Polyclonal
Target Name	Mesp1
Species	Human
Immunogen	Recombinant Human Mesp1.
Conjugation	Un-conjugated
Alternate Names	MESP1; Mesoderm Posterior BHLH Transcription Factor 1; BHLHc5; Mesoderm Posterior Basic Helix-Loop-Helix Transcription Factor 1; Class C Basic Helix-Loop-Helix Protein 5; Mesoderm Posterior Protein 1; MGC10676; Mesoderm Posterior 1 Homolog (Mouse); Mesoderm Posterior 1 Homolog; BHLHC5

### Application Instructions

Application table	Application	Dilution
	IHC-Fr	1:200
	WB	1-5 µg/ml
Application Note	* The dilutions indicate recommended starting dilutions and the optimal dilutions or concentrations should be determined by the scientist.	

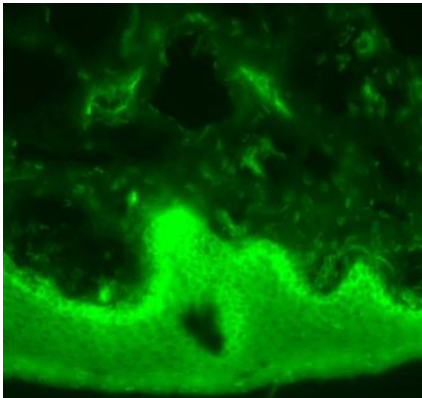
### Properties

Form	Powder
Purification	Protein A purified
Buffer	PBS
Reconstitution	Water
Concentration	0.1 - 1.0 mg/ml
Storage instruction	For continuous use, store undiluted antibody at 2-8°C for up to a week. For long-term storage, aliquot and store at -20°C or below. Storage in frost free freezers is not recommended. Avoid repeated freeze/thaw cycles. Suggest spin the vial prior to opening. The antibody solution should be gently mixed before use.
Note	For laboratory research only, not for drug, diagnostic or other use.

### Bioinformation

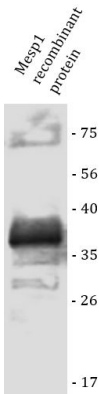
Gene Symbol	Mesp1
Gene Full Name	Mesoderm Posterior BHLH Transcription Factor 1
Background	Enables DNA-binding transcription factor activity and transcription cis-regulatory region binding activity. Involved in several processes, including endothelial cell differentiation; heart development; and positive regulation of transcription by RNA polymerase II. Predicted to be located in chromatin. Predicted to be active in nucleus. Implicated in myocardial infarction. Biomarker of diabetic retinopathy. [provided by Alliance of Genome Resources, Nov 2024]
Function	Transcription factor. Plays a role in the epithelialization of somitic mesoderm and in the development of cardiac mesoderm. Defines the rostrocaudal patterning of the somites by participating in distinct Notch pathways.
Calculated Mw	29 kDa
Cellular Localization	Nucleus. [UniProt]

Images



ARG67216 anti-Mesp1 antibody IHC-Fr image

Immunohistochemistry: Frozen Human foreskin stained with ARG67216 anti-Mesp1 antibody at 1:100 dilution.



ARG67216 anti-Mesp1 antibody WB image

Western blot: Mesp1 recombinant protein stained with ARG67216 anti-Mesp1 antibody.