

## ARG67210 anti-Endocan antibody

Package: 100 µg  
Store at: -20°C

### Summary

Product Description	Rabbit Polyclonal antibody recognizes Endocan
Tested Reactivity	Hu
Tested Application	IHC-Fr, WB
Host	Rabbit
Clonality	Polyclonal
Target Name	Endocan
Species	Human
Immunogen	Recombinant protein corresponding to Human Endocan (a.a. sequence W19-R184).
Conjugation	Un-conjugated
Alternate Names	ESM1; Endothelial Cell Specific Molecule 1; Endothelial Cell-Specific Molecule 1; ESM-1; Endocan

### Application Instructions

Application table	Application	Dilution
	IHC-Fr	1:100 - 1:200
	WB	1-5 µg/ml
Application Note	* The dilutions indicate recommended starting dilutions and the optimal dilutions or concentrations should be determined by the scientist.	

### Properties

Form	Powder
Purification	Protein A purified
Buffer	0.5X PBS, pH 7.2
Reconstitution	Water
Concentration	0.1 - 1.0 mg/ml
Storage instruction	For continuous use, store undiluted antibody at 2-8°C for up to a week. For long-term storage, aliquot and store at -20°C or below. Storage in frost free freezers is not recommended. Avoid repeated freeze/thaw cycles. Suggest spin the vial prior to opening. The antibody solution should be gently mixed before use.
Note	For laboratory research only, not for drug, diagnostic or other use.

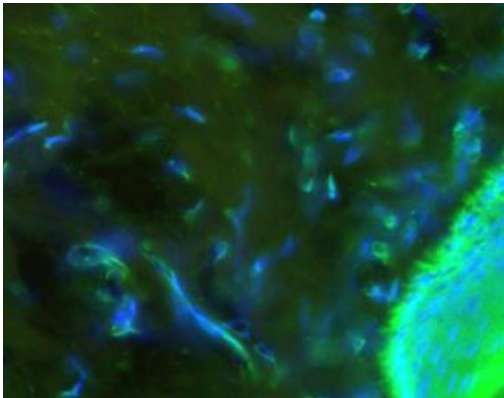
### Bioinformation

Gene Symbol	ESM1
-------------	------

Gene Full Name	Endothelial Cell Specific Molecule 1
Background	This gene encodes a secreted protein which is mainly expressed in the endothelial cells in human lung and kidney tissues. The expression of this gene is regulated by cytokines, suggesting that it may play a role in endothelium-dependent pathological disorders. The transcript contains multiple polyadenylation and mRNA instability signals. Two transcript variants encoding different isoforms have been found for this gene. [provided by RefSeq, Oct 2008]
Function	Involved in angiogenesis; promotes angiogenic sprouting. May have potent implications in lung endothelial cell-leukocyte interactions. [UniProt]
Calculated Mw	20 kDa
PTM	Disulfide bond; Glycoprotein; Proteoglycan. [UniProt]
Cellular Localization	Secreted. [UniProt]

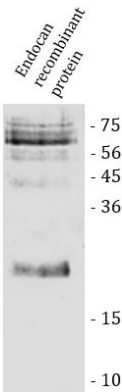
Images

---



ARG67210 anti-Endocan antibody IHC-Fr image

Immunohistochemistry: Frozen Human foreskin stained with ARG67210 anti-Endocan antibody at 1:100 dilution.



ARG67210 anti-Endocan antibody WB image

Western blot: Endocan recombinant protein stained with ARG67210 anti-Endocan antibody.