

ARG67209 anti-CCBE1 antibody

Package: 100 µg
Store at: -20°C

Summary

Product Description	Rabbit Polyclonal antibody recognizes CCBE1
Tested Reactivity	Hu
Tested Application	IHC-P, WB
Host	Rabbit
Clonality	Polyclonal
Target Name	CCBE1
Species	Human
Immunogen	Recombinant fragment corresponding to aa. C159-L251 of human CCBE1.
Conjugation	Un-conjugated
Alternate Names	CCBE1; Collagen And Calcium Binding EGF Domains 1; KIAA1983; Collagen And Calcium-Binding EGF Domain-Containing Protein 1; Full Of Fluid Protein Homolog; FLJ30681; HKLS1

Application Instructions

Application table	Application	Dilution
	IHC-P	1-5µg/ml
	WB	1-5µg/ml
Application Note	* The dilutions indicate recommended starting dilutions and the optimal dilutions or concentrations should be determined by the scientist.	

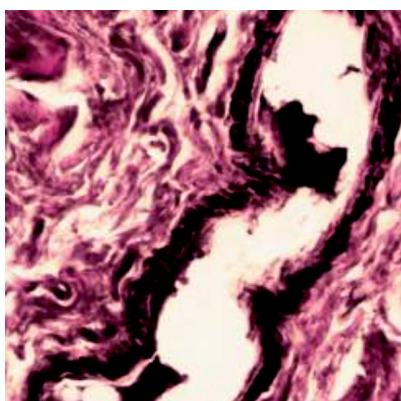
Properties

Form	Powder
Purification	Protein A purified
Buffer	PBS
Reconstitution	Water
Concentration	0.1 - 1.0 mg/ml
Storage instruction	For continuous use, store undiluted antibody at 2-8°C for up to a week. For long-term storage, aliquot and store at -20°C or below. Storage in frost free freezers is not recommended. Avoid repeated freeze/thaw cycles. Suggest spin the vial prior to opening. The antibody solution should be gently mixed before use.
Note	For laboratory research only, not for drug, diagnostic or other use.

Bioinformation

Gene Symbol	CCBE1
Gene Full Name	Collagen And Calcium Binding EGF Domains 1
Background	This gene is thought to function in extracellular matrix remodeling and migration. It is predominantly expressed in the ovary, but down regulated in ovarian cancer cell lines and primary carcinomas, suggesting its role as a tumour suppressor. Mutations in this gene have been associated with Hennekam lymphangiectasia-lymphedema syndrome, a generalized lymphatic dysplasia in humans. [provided by RefSeq, Mar 2010]
Function	Required for lymphangioblast budding and angiogenic sprouting from venous endothelium during embryogenesis. [UniProt]
Calculated Mw	44 kDa
PTM	Disulfide bond; Glycoprotein; Proteoglycan. [UniProt]
Cellular Localization	Secreted. [UniProt]

Images



ARG67209 anti-CCBE1 antibody IHC-P image

Immunohistochemistry: Human skin stained with ARG67209 anti-CCBE1 antibody at 1:100 dilution.



ARG67209 anti-CCBE1 antibody WB image

Western blot: CCBE1 recombinant protein stained with ARG67209 anti-CCBE1 antibody.