

ARG67208 anti-AGGF1 antibody

Package: 100 µg
Store at: -20°C

Summary

Product Description	Rabbit Polyclonal antibody recognizes AGGF1
Tested Reactivity	Hu
Tested Application	IHC-Fr, WB
Host	Rabbit
Clonality	Polyclonal
Isotype	Rabbit IgG
Target Name	AGGF1
Species	Human
Immunogen	Recombinant fragment corresponding to aa. Q421-S520 of human AGGF1.
Conjugation	Un-conjugated
Alternate Names	AGGF1; Angiogenic Factor With G-Patch And FHA Domains 1; GPATCH7; GPATC7; VG5Q; HSU84971; Angiogenic Factor With G Patch And FHA Domains 1; G Patch Domain-Containing Protein 7; Vasculogenesis Gene On 5q Protein; Angiogenic Factor VG5Q; FLJ10283; HUS84971; HVG5Q;

Application Instructions

Application table	Application	Dilution
	IHC-Fr	1:50
	WB	1-5 µg/ml
Application Note	* The dilutions indicate recommended starting dilutions and the optimal dilutions or concentrations should be determined by the scientist.	

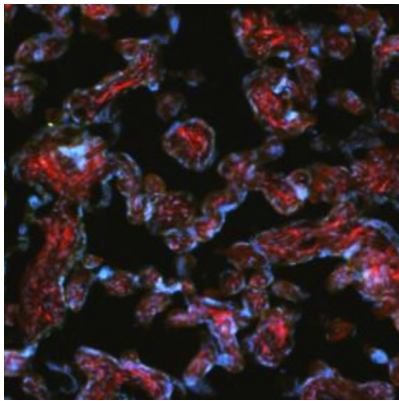
Properties

Form	Powder
Purification	Protein A purified
Buffer	PBS
Reconstitution	water
Concentration	0.1 - 1 mg/ml
Storage instruction	For continuous use, store undiluted antibody at 2-8°C for up to a week. For long-term storage, aliquot and store at -20°C or below. Storage in frost free freezers is not recommended. Avoid repeated freeze/thaw cycles. Suggest spin the vial prior to opening. The antibody solution should be gently mixed before use.
Note	For laboratory research only, not for drug, diagnostic or other use.

Bioinformation

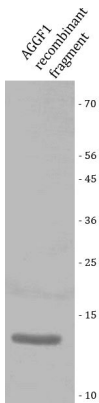
Gene Symbol	AGGF1
Gene Full Name	Angiogenic Factor With G-Patch And FHA Domains 1
Background	This gene encodes an angiogenic factor that promotes proliferation of endothelial cells. Mutations in this gene are associated with a susceptibility to Klippel-Trenaunay syndrome. Pseudogenes of this gene are found on chromosomes 3, 4, 10 and 16.[provided by RefSeq, Sep 2010]
Function	Promotes angiogenesis and the proliferation of endothelial cells. Able to bind to endothelial cells and promote cell proliferation, suggesting that it may act in an autocrine fashion. [UniProt]
Calculated Mw	81 kDa
PTM	Acetylation; Phosphoprotein. [UniProt]
Cellular Localization	Cytoplasm; Secreted. [UniProt]

Images



ARG67208 anti-AGGF1 antibody IHC-Fr image

Immunohistochemistry: Frozen Human placental stained with ARG67208 anti-AGGF1 antibody at 1:50 dilution.



ARG67208 anti-AGGF1 antibody WB image

Western blot: AGGF1 recombinant fragment stained with ARG67208 anti-AGGF1 antibody.