

ARG67178
anti-PSBO1 + PSBO2 antibodyPackage: 100 µl
Store at: -20°C

Summary

Product Description	Rabbit Polyclonal antibody recognizes PSBO1 and PSBO2
Tested Reactivity	Arabi
Tested Application	WB
Host	Rabbit
Clonality	Polyclonal
Isotype	IgG
Target Name	PSBO1 + PSBO2
Species	Plant
Immunogen	Synthetic peptide corresponding to center region of arabidopsis thaliana PSBO1/2 protein.
Conjugation	Un-conjugated
Alternate Names	PSBO; Oxygen-evolving enhancer protein 1-1 chloroplastic; OEE1; 33 kDa subunit of oxygen evolving system of photosystem II; 33 kDa thylakoid membrane protein; Manganese-stabilizing protein 1; MSP-1; OEC 33 kDa subunit; Oxygen-evolving enhancer protein 1-2 chloroplastic; OEE1; 33 kDa subunit of oxygen evolving system of photosystem II; 33 kDa thylakoid membrane protein; Manganese-stabilizing protein 2; MSP-2; OEC 33 kDa subunit

Application Instructions

Application table	Application	Dilution
	WB	1:500 - 1:2000
Application Note	* The dilutions indicate recommended starting dilutions and the optimal dilutions or concentrations should be determined by the scientist.	
Observed Size	35 kDa	

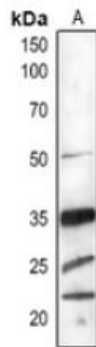
Properties

Form	Liquid
Purification	Affinity purification with immunogen.
Buffer	0.42% Potassium phosphate (pH 7.3), 0.87% NaCl, 0.01% Sodium azide and 30% Glycerol.
Preservative	0.01% Sodium azide
Stabilizer	30% Glycerol
Storage instruction	For continuous use, store undiluted antibody at 2-8°C for up to a week. For long-term storage, aliquot and store at -20°C or below. Storage in frost free freezers is not recommended. Avoid repeated freeze/thaw cycles. Suggest spin the vial prior to opening. The antibody solution should be gently mixed before use.
Note	For laboratory research only, not for drug, diagnostic or other use.

Bioinformation

Gene Symbol	PSBO1; PSBO2
Gene Full Name	PS II oxygen-evolving complex 1 + PS II oxygen-evolving complex 2
Background	Encodes a protein which is an extrinsic subunit of photosystem II and which has been proposed to play a central role in stabilization of the catalytic manganese cluster. In <i>Arabidopsis thaliana</i> the PsbO proteins are encoded by two genes: psbO1 and psbO2. PsbO1 is the major isoform in the wild-type. In <i>plsp1-1</i> mutant plastids, the nonmature form of the protein localizes in the membrane. PsbO2 is the minor isoform in the wild-type. Mutants defective in this gene have been shown to be affected in the dephosphorylation of the D1 protein of PSII.
Function	Stabilizes the manganese cluster which is the primary site of water splitting. [UniProt]
Calculated Mw	35 kDa
Cellular Localization	Plastid, chloroplast thylakoid membrane. [UniProt]

Images



ARG67178 anti-PSBO1 + PSBO2 antibody WB image

Western blot: *Arabidopsis thaliana* stained with ARG67178 anti-PSBO1 + PSBO2 antibody.