

ARG67140 anti-CD107b / LAMP2 antibody

Package: 20 µl
Store at: -20°C

Summary

Product Description	Rabbit Polyclonal antibody recognizes CD107b / LAMP2
Tested Reactivity	Hu, Ms, Rat
Tested Application	IHC-P, WB
Host	Rabbit
Clonality	Polyclonal
Isotype	IgG
Target Name	CD107b / LAMP2
Species	Human
Immunogen	Synthetic peptide of Human CD107b / LAMP2A.
Conjugation	Un-conjugated
Alternate Names	LAMP2; Lysosomal Associated Membrane Protein 2; CD107b; Lysosome-Associated Membrane Glycoprotein 2; CD107 Antigen-Like Family Member B; LAMP-2; LGP-96; Lysosomal-Associated Membrane Protein 2; Lysosome-Associated Membrane Protein 2; CD107b Antigen; LGP110; LAMPB; DND

Application Instructions

Application table	Application	Dilution
	IHC-P	1:100 - 1:300
	WB	1:500 - 1:2000
Application Note	* The dilutions indicate recommended starting dilutions and the optimal dilutions or concentrations should be determined by the scientist.	
Observed Size	~ 100-110 kDa	

Properties

Form	Liquid
Purification	Affinity chromatography purified
Buffer	PBS, 0.02% Sodium azide, 0.5% BSA and 50% Glycerol
Preservative	0.02% Sodium azide
Stabilizer	0.5% BSA, 50% Glycerol
Concentration	1 mg/ml
Storage instruction	For continuous use, store undiluted antibody at 2-8°C for up to a week. For long-term storage, aliquot and store at -20°C or below. Storage in frost free freezers is not recommended. Avoid repeated freeze/thaw cycles. Suggest spin the vial prior to opening. The antibody solution should be gently mixed

before use.

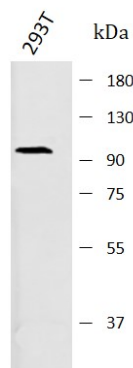
Note

For laboratory research only, not for drug, diagnostic or other use.

Bioinformation

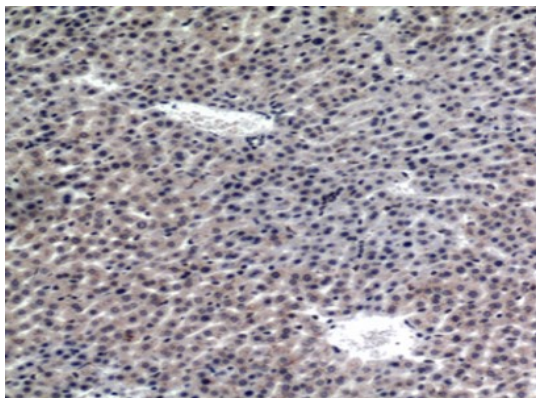
Gene Symbol	LAMP2
Gene Full Name	lysosomal-associated membrane protein 2
Background	The protein encoded by this gene is a member of a family of membrane glycoproteins. This glycoprotein provides selectins with carbohydrate ligands. It may play a role in tumor cell metastasis. It may also function in the protection, maintenance, and adhesion of the lysosome. Alternative splicing of this gene results in multiple transcript variants encoding distinct proteins. [provided by RefSeq, Jul 2008]
Function	Lysosomal membrane glycoprotein which plays an important role in lysosome biogenesis, lysosomal pH regulation and autophagy. [UniProt]
Research Area	Cell Biology and Cellular Response antibody; Cell Death antibody; Controls and Markers antibody; Developmental Biology antibody; Immune System antibody; Metabolism antibody; Signaling Transduction antibody
Calculated Mw	45 kDa
PTM	Disulfide bond, Glycoprotein. [UniProt]
Cellular Localization	Cell membrane, Cytoplasmic vesicle, Endosome, Lysosome, Membrane. [UniProt]

Images



ARG67140 anti-CD107b / LAMP2 antibody WB image

Western blot: 293T stained with ARG67140 anti-CD107b / LAMP2 antibody at 1:1000 dilution.



ARG67140 anti-CD107b / LAMP2 antibody IHC-P image

Immunohistochemistry: Mouse liver stained with ARG67140 anti-CD107b / LAMP2 antibody at 1:100 dilution.