

## ARG67131 anti-Bcl 2 antibody

Package: 20 µl  
Store at: -20°C

### Summary

Product Description	Rabbit Polyclonal antibody recognizes Bcl 2
Tested Reactivity	Hu, Ms, Rat, Chk
Tested Application	ICC/IF, IHC-P, WB
Host	Rabbit
Clonality	Polyclonal
Isotype	IgG
Target Name	Bcl 2
Species	Human
Immunogen	Synthetic peptide of Human Bcl 2.
Conjugation	Un-conjugated
Alternate Names	BCL2; BCL2 Apoptosis Regulator; PPP1R50; Bcl-2; Protein Phosphatase 1, Regulatory Subunit 50; Apoptosis Regulator Bcl-2; B-Cell CLL/Lymphoma 2; BCL2, Apoptosis Regulator

### Application Instructions

Application table	Application	Dilution
	ICC/IF	1:200 - 1:1000
	IHC-P	1:100 - 1:300
	WB	1:500 - 1:2000
Application Note	* The dilutions indicate recommended starting dilutions and the optimal dilutions or concentrations should be determined by the scientist.	

### Properties

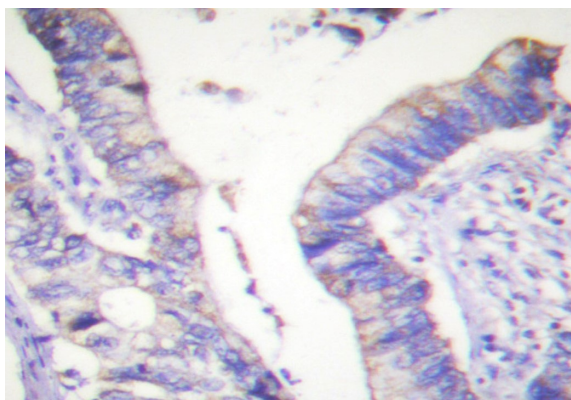
Form	Liquid
Purification	Affinity chromatography purified
Buffer	PBS, 0.02% Sodium azide, 0.5% BSA and 50% Glycerol
Preservative	0.02% Sodium azide
Stabilizer	0.5% BSA, 50% Glycerol
Concentration	1 mg/ml
Storage instruction	For continuous use, store undiluted antibody at 2-8°C for up to a week. For long-term storage, aliquot and store at -20°C or below. Storage in frost free freezers is not recommended. Avoid repeated freeze/thaw cycles. Suggest spin the vial prior to opening. The antibody solution should be gently mixed before use.

Note For laboratory research only, not for drug, diagnostic or other use.

## Bioinformation

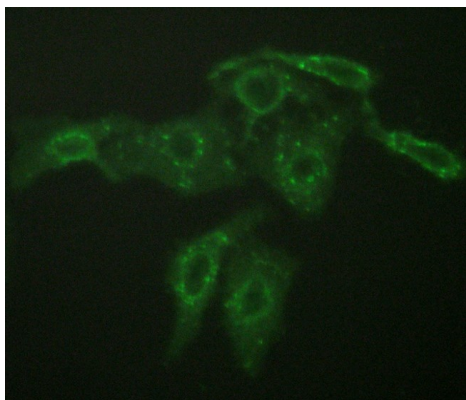
Gene Symbol	BCL2
Gene Full Name	B-cell CLL/lymphoma 2
Background	This gene encodes an integral outer mitochondrial membrane protein that blocks the apoptotic death of some cells such as lymphocytes. Constitutive expression of BCL2, such as in the case of translocation of BCL2 to Ig heavy chain locus, is thought to be the cause of follicular lymphoma. Alternative splicing results in multiple transcript variants. [provided by RefSeq, Feb 2016]
Function	Suppresses apoptosis in a variety of cell systems including factor-dependent lymphohematopoietic and neural cells. [UniProt]
Highlight	Related Antibody Duos and Panels: <a href="#">ARG30268 Apoptosis Marker Antibody Duo (Bcl2, Bax)</a> <a href="#">ARG30269 Apoptosis Marker Antibody Duo (Bcl2, Bid)</a> Related products: <a href="#">Bcl-2 antibodies</a> ; <a href="#">Bcl-2 Duos / Panels</a> ; <a href="#">Anti-Rabbit IgG secondary antibodies</a> ; Related news: <a href="#">Lymphoma</a>
Research Area	Cancer antibody; Cell Biology and Cellular Response antibody; Cell Death antibody; Metabolism antibody; Signaling Transduction antibody; Apoptosis Marker antibody
Calculated Mw	26 kDa
PTM	Phosphoprotein, Ubl conjugation. [UniProt]
Cellular Localization	Cytoplasm, Endoplasmic reticulum, Membrane, Mitochondrion, Mitochondrion outer membrane, Nucleus. [UniProt]

## Images



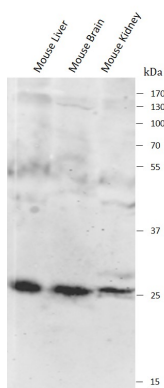
ARG67131 anti-Bcl 2 antibody IHC-P image

Immunohistochemistry: Human colon carcinoma stained with ARG67131 anti-Bcl 2 antibody.



ARG67131 anti-Bcl 2 antibody ICC/IF image

Immunofluorescence: HepG2 stained with ARG67131 anti-Bcl 2 antibody.



ARG67131 anti-Bcl 2 antibody WB image

Western blot: Mouse Liver, Mouse Brain and Mouse Kidney stained with ARG67131 anti-Bcl 2 antibody at 1:1000 dilution.