

ARG67090 anti-CD245 antibody [DY12]

Package: 100 µg
Store at: 4°C

Summary

Product Description	Mouse Monoclonal antibody [DY12] recognizes CD245
Tested Reactivity	Hu
Tested Application	FACS, IHC-P, WB
Host	Mouse
Clonality	Monoclonal
Clone	DY12
Isotype	IgG1
Target Name	CD245
Species	Human
Immunogen	NK-type YT2C2 cell
Conjugation	Un-conjugated
Alternate Names	MYO18A; Myosin XVIIIa; KIAA0216; MYSPDZ; TIAF1; 12 KDa TGF-Beta-1-Induced Antiapoptotic Factor; Putative TGFB1-Induced Anti-Apoptotic Factor 1; Molecule Associated With JAK3 N-Terminus; TGFB1-Induced Anti-Apoptotic Factor 1; Surfactant Protein Receptor SP-R210; Myosin Containing A PDZ Domain; Unconventional Myosin-XVIIIa; SP-R210; MAJN; TGF-Beta-1-Induced Antiapoptotic Factor 1; Molecule Associated With Jak-3 N-Terminal; SP-A Receptor Subunit SP-R210 AlphaS; Myosin Containing PDZ Domain; Myosin 18A; MysPDZ; SPR210; CD245

Application Instructions

Application table	Application	Dilution
	FACS	1-5 µg/ml
	IHC-P	Assay-dependent
	WB	Assay-dependent
Application Note	* The dilutions indicate recommended starting dilutions and the optimal dilutions or concentrations should be determined by the scientist.	

Properties

Form	Liquid
Purification	Purified
Buffer	PBS (pH 7.4) and 15 mM Sodium azide.
Preservative	15 mM Sodium azide
Concentration	1 mg/ml
Storage instruction	Aliquot and store in the dark at 4°C. Keep protected from prolonged exposure to light. Do not freeze.

Suggest spin the vial prior to opening. The antibody solution should be gently mixed before use.

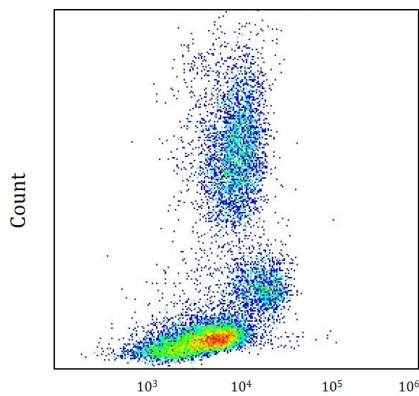
Note

For laboratory research only, not for drug, diagnostic or other use.

Bioinformation

Gene Symbol	MYO18A
Gene Full Name	Myosin XVIII A
Background	The protein encoded by this gene can bind GOLPH3, linking the Golgi to the cytoskeleton and influencing Golgi membrane trafficking. The encoded protein is also part of a complex that assembles lamellar actomyosin bundles and may be required for cell migration.
Function	May link Golgi membranes to the cytoskeleton and participate in the tensile force required for vesicle budding from the Golgi. Thereby, may play a role in Golgi membrane trafficking and could indirectly give its flattened shape to the Golgi apparatus.
PTM	Phosphoprotein
Cellular Localization	Cytoplasm, Cytoskeleton, Golgi apparatus

Images



ARG67090 anti-CD245 antibody [DY12] FACS image

Flow Cytometry: Human whole blood stained with ARG67090 anti-CD245 antibody [DY12] at 10 μ l / 100 μ l whole blood dilution.