

ARG67056 anti-ChemR23 / CMKLR1 antibody

Package: 100 µl
Store at: -20°C

Summary

Tested Reactivity	Hu
Predict Reactivity	Ms, Rat
Tested Application	ICC/IF, IHC-P, WB
Host	Rabbit
Clonality	Polyclonal
Isotype	IgG
Target Name	ChemR23 / CMKLR1
Species	Human
Immunogen	Synthetic peptide corresponding to Human CMKLR1 .
Conjugation	Un-conjugated
Alternate Names	CMKLR1, Chemerin Chemokine-Like Receptor 1, Chemokine-Like Receptor 1, RVER1, G-Protein Coupled Receptor ChemR23, G-Protein Coupled Receptor DEZ, Chemerin-Like Receptor 1, Resolvin E1 Receptor, Chemerin Receptor, DEZ, Orphan G-Protein Coupled Receptor, Dez, Chemokine Receptor-Like 1, CHEMERINR, ChemR23, CHEMR23

Application Instructions

Application table	Application	Dilution
	ICC/IF	1:100 - 1:300
	IHC-P	1:100 - 1:300
	WB	1:500 - 1:2000
Positive Control	A549	
Observed Size	42 kDa	

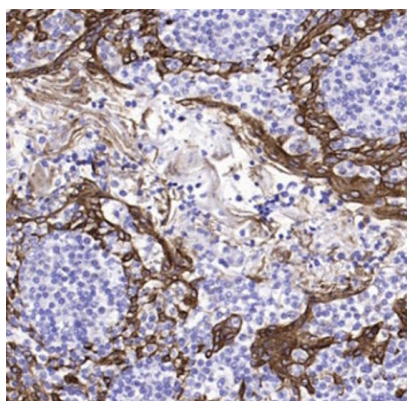
Properties

Form	Liquid
Purification	Affinity chromatography purified
Buffer	PBS, 0.02% Sodium azide, 50% Glycerol and 0.5% BSA.
Preservative	0.02% Sodium azide
Stabilizer	50% Glycerol and 0.5% BSA
Concentration	1 mg/ml
Storage instruction	For continuous use, store undiluted antibody at 2-8°C for up to a week. For long-term storage, aliquot and store at -20°C. Storage in frost free freezers is not recommended. Avoid repeated freeze/thaw cycles. Suggest spin the vial prior to opening. The antibody solution should be gently mixed before use.

Bioinformation

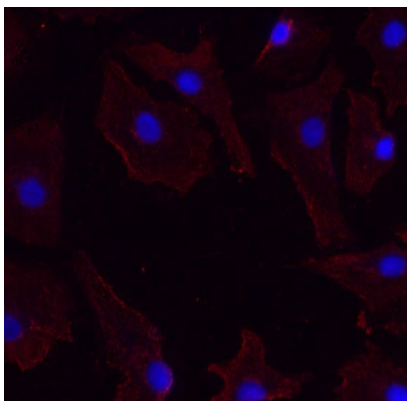
Gene Symbol	CMKLR1
Gene Full Name	Chemerin Chemokine-Like Receptor 1
Background	Enables adipokinetic hormone binding activity and adipokinetic hormone receptor activity. Involved in several processes, including negative regulation of NF-kappaB transcription factor activity; positive regulation of macrophage chemotaxis; and regulation of calcium-mediated signaling. Located in plasma membrane. [provided by Alliance of Genome Resources, Apr 2022]
Function	Receptor for the chemoattractant adipokine chemerin/RARRES2 and for the omega-3 fatty acid derived molecule resolvin E1. Interaction with RARRES2 initiates activation of G proteins G(i)/G(o) and beta-arrestin pathways inducing cellular responses via second messenger pathways such as intracellular calcium mobilization, phosphorylation of MAP kinases MAPK1/MAPK3 (ERK1/2), TYRO3, MAPK14/P38MAPK and PI3K leading to multifunctional effects, like, reduction of immune responses, enhancing of adipogenesis and angiogenesis PubMed:27716822. Resolvin E1 down-regulates cytokine production in macrophages by reducing the activation of MAPK1/3 (ERK1/2) and NF-kappa-B. Positively regulates adipogenesis and adipocyte metabolism. [UniProt]
Calculated Mw	42 kDa
PTM	Disulfide bond; Glycoprotein; Phosphoprotein
Cellular Localization	Cell membrane; Membrane

Images



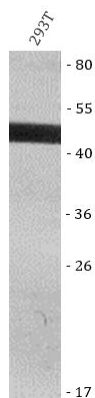
ARG67056 anti-ChemR23 / CMKLR1 antibody IHC-P image

Immunohistochemistry: Human tonsil stained with ARG67056 anti-ChemR23 / CMKLR1 antibody at 1:200 dilution.



ARG67056 anti-ChemR23 / CMKLR1 antibody ICC/IF image

Immunofluorescence: A549 stained with ARG67056 anti-ChemR23 / CMKLR1 antibody at 1:200 dilution.



ARG67056 anti-ChemR23 / CMKLR1 antibody WB image

Western blot: 293T stained with ARG67056 anti-ChemR23 / CMKLR1 antibody at 1:1000 dilution.