

## ARG67050 anti-HRH4 antibody

Package: 100 µl  
Store at: -20°C

### Summary

Product Description	Rabbit polyclonal antibody recognizes HRH4
Tested Reactivity	Hu
Tested Application	ELISA, ICC/IF, WB
Host	Rabbit
Clonality	Polyclonal
Isotype	IgG
Target Name	HRH4
Species	Human
Immunogen	Synthetic peptide of Human HRH4.
Conjugation	Un-conjugated
Alternate Names	HRH4, Histamine Receptor H4, GPCR105 , AXOR35, GPRv53, HH4R, H4R, G-Protein Coupled Receptor 105, Histamine H4 Receptor , Pfi-013, SP9144, BG26, H4

### Application Instructions

Application table	Application	Dilution
	ELISA	1:2000 - 1:5000
	ICC/IF	1:200 - 1:1000
	WB	1:500 - 1:2000
Positive Control	COLO	
Observed Size	58~52 kDa	

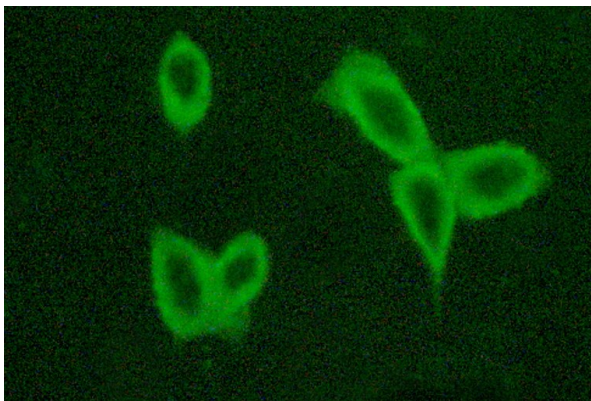
### Properties

Form	Liquid
Purification	Affinity chromatography purification
Buffer	PBS, 0.02% Sodium azide, 50% Glycerol and 0.5 mg/ml BSA.
Preservative	0.02% Sodium azide
Stabilizer	50% Glycerol and 0.5 mg/ml BSA
Storage instruction	For continuous use, store undiluted antibody at 2-8°C for up to a week. For long-term storage, aliquot and store at -20°C or below. Storage in frost free freezers is not recommended. Avoid repeated freeze/thaw cycles. Suggest spin the vial prior to opening. The antibody solution should be gently mixed before use.
Note	For laboratory research only, not for drug, diagnostic or other use.

Bioinformation

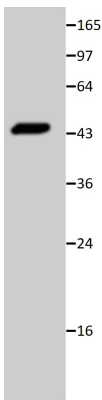
Gene Symbol	HRH4
Gene Full Name	Histamine Receptor H4
Background	Histamine is a ubiquitous messenger molecule released from mast cells, enterochromaffin-like cells, and neurons. Its various actions are mediated by a family of histamine receptors, which are a subset of the G-protein coupled receptor superfamily. This gene encodes a histamine receptor that is predominantly expressed in haematopoietic cells. The protein is thought to play a role in inflammation and allergy reponses. Multiple transcript variants encoding different isoforms have been found for this gene. [provided by RefSeq, May 2009]
Function	The H4 subclass of histamine receptors could mediate the histamine signals in peripheral tissues. Displays a significant level of constitutive activity (spontaneous activity in the absence of agonist). [UniProt]
Calculated Mw	44 kDa
PTM	Disulfide bond, Glycoprotein
Cellular Localization	Cell membrane; Membrane

Images



ARG67050 anti-HRH4 antibody ICC/IF image

Immunofluorescence: LOVO cell stained with ARG67050 anti-HRH4 antibody.



ARG67050 anti-HRH4 antibody antibody WB image

Western blot: COLO cell stained with ARG67050 anti-HRH4 antibody.