

## ARG66982 anti-Ki-67 antibody [SP6]

Package: 100 µl  
Store at: -20°C

### Summary

Product Description	Rabbit Monoclonal antibody [SP6] recognizes Ki-67
Tested Reactivity	Hu, Ms, Rat
Tested Application	ICC/IF, IHC-P, WB
Host	Rabbit
Clonality	Monoclonal
Clone	SP6
Isotype	IgG
Target Name	Ki-67
Species	Human
Immunogen	Synthetic peptide from C-terminus of human Ki-67 protein.
Conjugation	Un-conjugated
Alternate Names	Antigen Ki-67; MIB-; KIA; MIB-1; PPP1R105

### Application Instructions

Application table	Application	Dilution
	ICC/IF	1:100 - 1:200
	IHC-P	1:100 - 1:200
	WB	1:500 - 1:1000
Application Note	<p>IHC-P: Antigen Retrieval: Boil tissue section in 10mM citrate buffer, pH 6.0 for 10 min followed by cooling at RT for 20 min.</p> <p>Incubation Time: 30 min at RT.</p> <p>* The dilutions indicate recommended starting dilutions and the optimal dilutions or concentrations should be determined by the scientist.</p>	

### Properties

Form	Liquid
Purification	Affinity purified.
Buffer	100 mM Tris Glycine (pH 7.0), 0.025% ProClin 300, 1%BSA and 20% Glycerol.
Preservative	0.025% ProClin 300
Stabilizer	1%BSA and 20% Glycerol
Storage instruction	For continuous use, store undiluted antibody at 2-8°C for up to a week. For long-term storage, aliquot and store at -20°C or below. Storage in frost free freezers is not recommended. Avoid repeated freeze/thaw cycles. Suggest spin the vial prior to opening. The antibody solution should be gently mixed

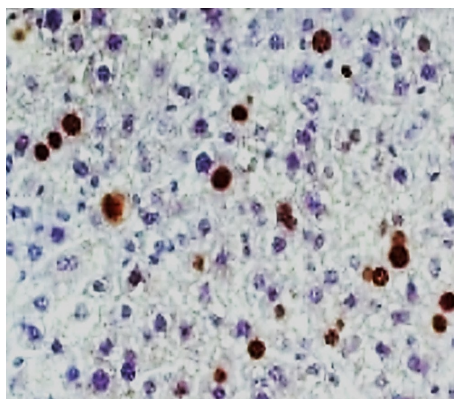
before use.

**Note** For laboratory research only, not for drug, diagnostic or other use.

## Bioinformation

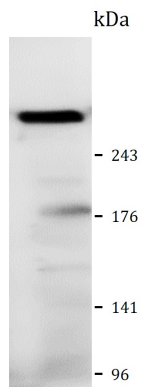
Gene Symbol	MKI67
Gene Full Name	marker of proliferation Ki-67
Background	Ki-67 is a nuclear protein, which is expressed in the proliferating cells. Ki-67 is preferentially expressed during late G1-, S-, M-, and G2-phases of the cell cycle, while cells in the G0 (quiescent) phase are negative for this protein.
Highlight	<p>Related products: <a href="#">Ki67 antibodies</a>; <a href="#">Ki67 Duos / Panels</a>; <a href="#">Anti-Rabbit IgG secondary antibodies</a>;</p> <p>Related news: <a href="#">Understanding Your Cells: Choose the right markers</a> <a href="#">SM5-1, a promising immunotherapy for Hepatocellular Carcinoma (HCC)</a> <a href="#">Neuronal Development Marker</a> <a href="#">Choose the Best ZIKA Virus Antibodies</a> <a href="#">Fight microcephaly with arigo</a> <a href="#">Tools for studying Exosomes</a></p>
Research Area	Microvascular Density Study antibody; Proliferation Marker antibody
Calculated Mw	345 kDa and 395 kDa
PTM	Phosphorylated. Hyperphosphorylated in mitosis (PubMed:10502411, PubMed:10653604). Hyperphosphorylated form does not bind DNA.
Cellular Localization	Nucleus

## Images



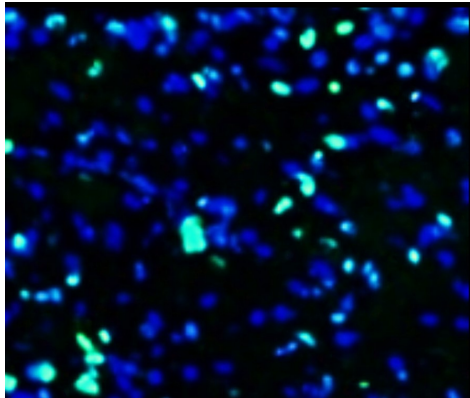
ARG66982 anti-Ki-67 antibody IHC-P image

Immunohistochemistry: Paraffin-embedded Mouse liver tissue stained with ARG66982 anti-Ki-67 antibody at 1:100 dilution.



#### ARG66982 anti-Ki-67 antibody WB image

Western blot: CT26 cell lysate stained with ARG66982 anti-Ki-67 antibody at 1:500 dilution, overnight at 4°C.



#### ARG66982 anti-Ki-67 antibody IHC-P image

Immunohistochemistry: Paraffin-embedded Mouse heart tissue stained with ARG66982 anti-Ki-67 antibody at 1:100 dilution.