

ARG66979 anti-CTGF antibody

Package: 100 µl
Store at: -20°C

Summary

Product Description	Rabbit Polyclonal antibody recognizes CTGF
Tested Reactivity	Hu, Ms
Predict Reactivity	Rat
Tested Application	ICC/IF, IHC-P, WB
Host	Rabbit
Clonality	Polyclonal
Isotype	IgG
Target Name	CTGF
Species	Human
Immunogen	Synthetic peptide around the middle region of Human CTGF.
Conjugation	Un-conjugated
Alternate Names	Insulin-like growth factor-binding protein 8; IGFBP-8; CCN2; IBP-8; HCS24; Connective tissue growth factor; IGF-binding protein 8; CCN family member 2; IGFBP8; Hypertrophic chondrocyte-specific protein 24; NOV2

Application Instructions

Application table	Application	Dilution
	ICC/IF	1:200 - 1:300
	IHC-P	1:50 - 1:150
	WB	1:500 - 1:1000
Application Note	IHC-P: Antigen Retrieval: Boil tissue section in Sodium Citrate buffer (pH 6.0) * The dilutions indicate recommended starting dilutions and the optimal dilutions or concentrations should be determined by the scientist.	
Positive Control	HepG2; Spleen; Skin carcinoma	

Properties

Form	Liquid
Purification	Affinity purified.
Buffer	100 mM Tris Glycine (pH 7.0), 0.025% ProClin 300 and 20% Glycerol.
Preservative	0.025% ProClin 300
Stabilizer	20% Glycerol
Storage instruction	For continuous use, store undiluted antibody at 2-8°C for up to a week. For long-term storage, aliquot and store at -20°C or below. Storage in frost free freezers is not recommended. Avoid repeated

freeze/thaw cycles. Suggest spin the vial prior to opening. The antibody solution should be gently mixed before use.

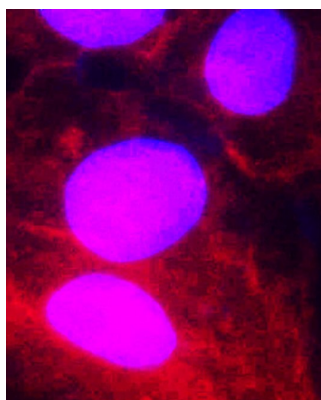
Note

For laboratory research only, not for drug, diagnostic or other use.

Bioinformation

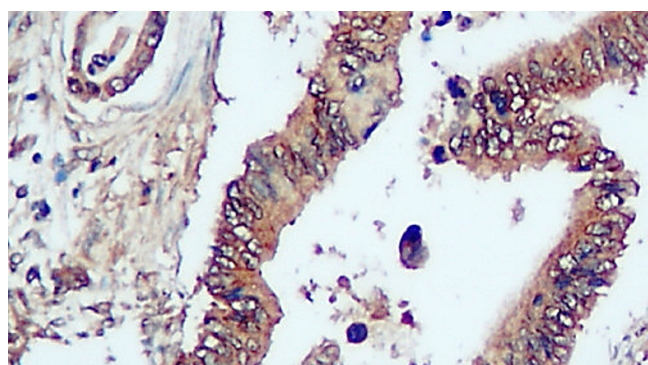
Gene Symbol	CTGF
Gene Full Name	connective tissue growth factor
Background	The protein encoded by this gene is a mitogen that is secreted by vascular endothelial cells. The encoded protein plays a role in chondrocyte proliferation and differentiation, cell adhesion in many cell types, and is related to platelet-derived growth factor. Certain polymorphisms in this gene have been linked with a higher incidence of systemic sclerosis. [provided by RefSeq, Nov 2009]
Function	Major connective tissue mitogen secreted by vascular endothelial cells. Promotes proliferation and differentiation of chondrocytes. Mediates heparin- and divalent cation-dependent cell adhesion in many cell types including fibroblasts, myofibroblasts, endothelial and epithelial cells. Enhances fibroblast growth factor-induced DNA synthesis. [UniProt]
Calculated Mw	38 kDa; 17 kDa

Images



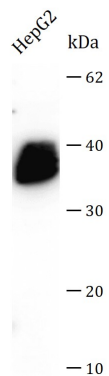
ARG66979 anti-CTGF antibody ICC/IF image

Immunofluorescence: HepG2 cells were fixed with 4% paraformaldehyde at RT for 10 min, permeabilized with 0.1% NP-40 at RT for 10 min and then cells were blocked with 5% BSA at RT for 30 min and stained with ARG66979 anti-CTGF antibody (red) at 1:200 dilution at 4°C for overnight. DAPI (blue) was used for nuclear staining.



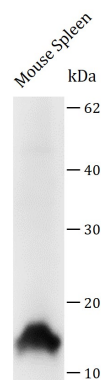
ARG66979 anti-CTGF antibody IHC-P image

Immunohistochemistry: Paraffin-embedded Human Skin carcinoma tissue stained with ARG66979 anti-CTGF antibody at 1:100 dilution. Antigen Retrieval: Boil tissue section in Citrate buffer (pH 6.0).



ARG66979 anti-CTGF antibody WB image (Human)

Western blot: HepG2 condition medium stained with ARG66979 anti-CTGF antibody at 1:700 dilution, overnight at 4°C.



ARG66979 anti-CTGF antibody WB image (Mouse)

Western blot: 50 µg of Mouse Spleen tissue cell lysate stained with ARG66979 anti-CTGF antibody at 1:700 dilution, overnight at 4°C.