

ARG66978 anti-CD62P / P-Selectin antibody

Package: 100 µl
Store at: -20°C

Summary

Product Description	Rabbit Polyclonal antibody recognizes CD62P / P-Selectin
Tested Reactivity	Hu, Ms
Predict Reactivity	Rat
Tested Application	IHC-P, WB
Host	Rabbit
Clonality	Polyclonal
Isotype	IgG
Target Name	CD62P / P-Selectin
Species	Human
Immunogen	Synthetic peptide corresponding to the extracellular domain of Human CD62P / P-Selectin.
Conjugation	Un-conjugated
Alternate Names	PADGEM; CD62; Platelet activation dependent granule-external membrane protein; CD62 antigen-like family member P; GMP140; PSEL; Granule membrane protein 140; CD62P; CD antigen CD62P; Leukocyte-endothelial cell adhesion molecule 3; GRMP; GMP-140; P-selectin; LECAM3

Application Instructions

Application table	Application	Dilution
	IHC-P	1:100 - 1:200
	WB	1:500 - 1:1000
Application Note	IHC-P: Antigen Retrieval: Boil tissue section in Citrate buffer (pH 6.0). * The dilutions indicate recommended starting dilutions and the optimal dilutions or concentrations should be determined by the scientist.	
Positive Control	Kidney	
Observed Size	~120 - 140 kDa	

Properties

Form	Liquid
Purification	Affinity purified.
Buffer	100 mM Tris Glycine (pH 7.0), 0.025% ProClin 300 and 20% Glycerol.
Preservative	0.025% ProClin 300
Stabilizer	20% Glycerol
Storage instruction	For continuous use, store undiluted antibody at 2-8°C for up to a week. For long-term storage, aliquot and store at -20°C or below. Storage in frost free freezers is not recommended. Avoid repeated

freeze/thaw cycles. Suggest spin the vial prior to opening. The antibody solution should be gently mixed before use.

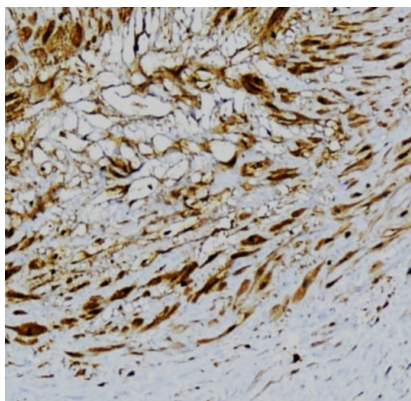
Note

For laboratory research only, not for drug, diagnostic or other use.

Bioinformation

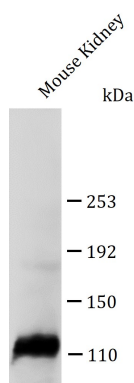
Gene Symbol	SELP
Gene Full Name	selectin P (granule membrane protein 140kDa, antigen CD62)
Background	This gene encodes a 140 kDa protein that is stored in the alpha-granules of platelets and Weibel-Palade bodies of endothelial cells. This protein redistributes to the plasma membrane during platelet activation and degranulation and mediates the interaction of activated endothelial cells or platelets with leukocytes. The membrane protein is a calcium-dependent receptor that binds to sialylated forms of Lewis blood group carbohydrate antigens on neutrophils and monocytes. Alternative splice variants may occur but are not well documented. [provided by RefSeq, Jul 2008]
Function	Ca(2+)-dependent receptor for myeloid cells that binds to carbohydrates on neutrophils and monocytes. Mediates the interaction of activated endothelial cells or platelets with leukocytes. The ligand recognized is sialyl-Lewis X. Mediates rapid rolling of leukocyte rolling over vascular surfaces during the initial steps in inflammation through interaction with PSGL1. [UniProt]
Calculated Mw	86 - 140 kDa (glycosylated)

Images



ARG66978 anti-CD62P / P-Selectin antibody IHC-P image

Immunohistochemistry: Paraffin-embedded Human tissue stained with ARG66978 anti-CD62P / P-Selectin antibody at 1:100 dilution. Antigen Retrieval: Boil tissue section in Citrate buffer (pH 6.0).



ARG66978 anti-CD62P / P-Selectin antibody WB image

Western blot: 50 µg of Mouse Kidney tissue lysate stained with ARG66978 anti-CD62P / P-Selectin antibody at 1:500 dilution, overnight at 4°C.