

ARG66973 anti-Cytokeratin (pan) antibody

Package: 100 µl
Store at: -20°C

Summary

Product Description	Rabbit Polyclonal antibody recognizes Cytokeratin (pan)
Tested Reactivity	Hu, Ms
Predict Reactivity	Rat
Tested Application	FACS, ICC/IF, IHC-P, WB
Specificity	Detects endogenous levels of total cytokeratin 5, 6, 7, 8, 14, 17, 18, 19 and 20.
Host	Rabbit
Clonality	Polyclonal
Isotype	IgG
Target Name	Cytokeratin (pan)
Species	Human
Conjugation	Un-conjugated
Alternate Names	67 kDa cytokeratin; KRT1A; EPPK; Keratin, type II cytoskeletal 1; EHK1; K1; Keratin-1; CK1; Cytokeratin-1; Hair alpha protein; Type-II keratin Kb1; CK-1; NEPPK; EHK

Application Instructions

Application table	Application	Dilution
	FACS	1:300 - 1:500
	ICC/IF	1:400 - 1:800
	IHC-P	1:400 - 1:800
	WB	1:2000 - 1:5000
Application Note	* The dilutions indicate recommended starting dilutions and the optimal dilutions or concentrations should be determined by the scientist.	
Positive Control	Skin, MCF7, A549, Colon	
Observed Size	50 kDa	

Properties

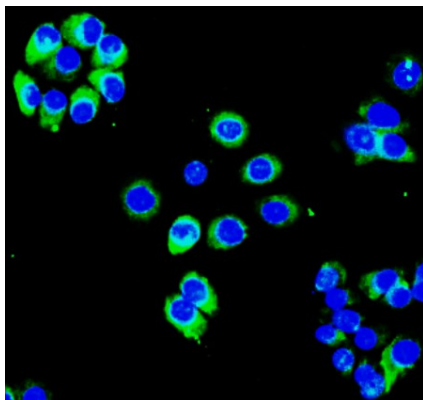
Form	Liquid
Purification	Affinity purified.
Buffer	PBS (pH 7.4), 0.025% ProClin 300 and 40% Glycerol.
Preservative	0.025% ProClin 300
Stabilizer	20% Glycerol

Storage instruction	For continuous use, store undiluted antibody at 2-8°C for up to a week. For long-term storage, aliquot and store at -20°C. Storage in frost free freezers is not recommended. Avoid repeated freeze/thaw cycles. Suggest spin the vial prior to opening. The antibody solution should be gently mixed before use.
Note	For laboratory research only, not for drug, diagnostic or other use.

Bioinformation

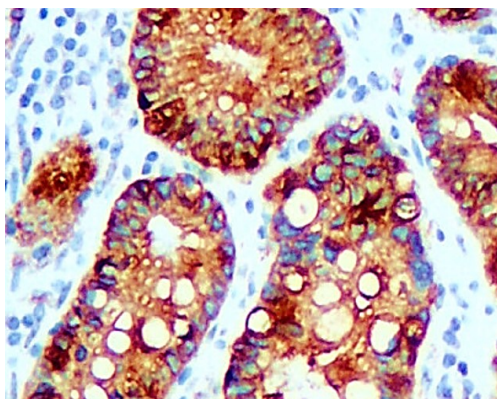
Gene Symbol	KRT1
Gene Full Name	keratin 1, type II
Background	The protein encoded by this gene is a member of the keratin gene family. The type II cytokeratins consist of basic or neutral proteins which are arranged in pairs of heterotypic keratin chains coexpressed during differentiation of simple and stratified epithelial tissues. This type II cytokeratin is specifically expressed in the spinous and granular layers of the epidermis with family member KRT10 and mutations in these genes have been associated with bullous congenital ichthyosiform erythroderma. The type II cytokeratins are clustered in a region of chromosome 12q12-q13. [provided by RefSeq, Jul 2008]
Function	May regulate the activity of kinases such as PKC and SRC via binding to integrin beta-1 (ITB1) and the receptor of activated protein C kinase 1 (RACK1). In complex with C1QBP is a high affinity receptor for kininogen-1/HMWK. [UniProt]
Calculated Mw	66 kDa
PTM	Undergoes deimination of some arginine residues (citrullination). [UniProt]
Cellular Localization	Cell membrane. Note=Located on plasma membrane of neuroblastoma NMB7 cells. [UniProt]

Images



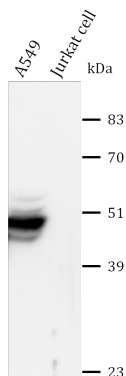
ARG66973 anti-Cytokeratin (pan) antibody ICC/IF image

Immunofluorescence: MCF7 cells were fixed with 4% paraformaldehyde at RT for 10 min, permeabilized with 0.1% NP-40 at RT for 10 min and then cells were blocked with 5% BSA at RT for 30 min and stained with ARG66973 anti-Cytokeratin (pan) antibody (green) at 1:400 dilution at 4°C for overnight. DAPI (blue) was used for nuclear staining.



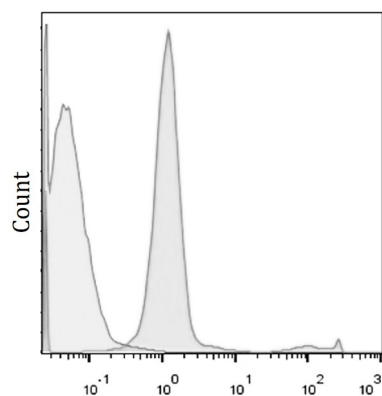
ARG66973 anti-Cytokeratin (pan) antibody IHC-P image

Immunohistochemistry: Paraffin-embedded Human gastric carcinoma tissue stained with ARG66973 anti-Cytokeratin (pan) antibody at 1:400 dilution.



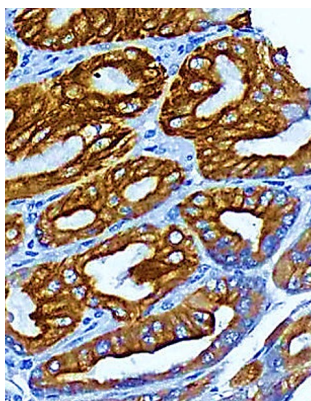
ARG66973 anti-Cytokeratin (pan) antibody WB image

Western blot: A549, Jurkat cell lysate stained with ARG66973 anti-Cytokeratin (pan) antibody at 1:3000 dilution, overnight at 4°C.



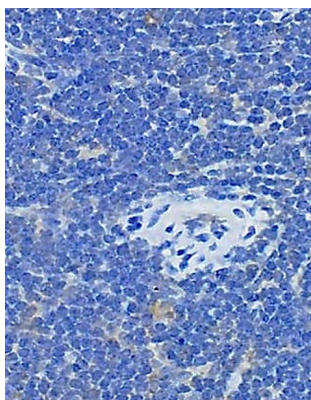
ARG66973 anti-Cytokeratin (pan) antibody FACS image

Flow Cytometry: MCF7 cells stained with ARG66973 anti-Cytokeratin (pan) antibody at 1:350 dilution.



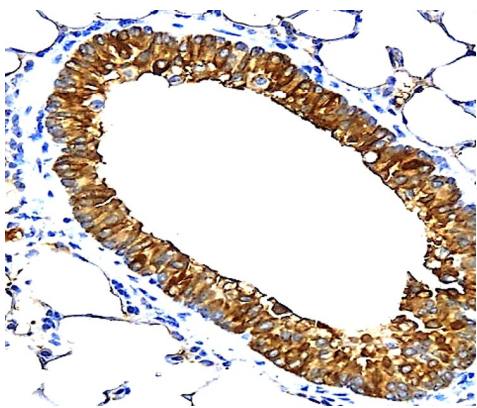
ARG66973 anti-Cytokeratin (pan) antibody IHC-P image

Immunohistochemistry: Paraffin-embedded Mouse colon tissue stained with ARG66973 anti-Cytokeratin (pan) antibody at 1:400 dilution.



ARG66973 anti-Cytokeratin (pan) antibody IHC-P image

Immunohistochemistry: Paraffin-embedded Mouse spleen tissue stained with ARG66973 anti-Cytokeratin (pan) antibody at 1:400 dilution.



ARG66973 anti-Cytokeratin (pan) antibody IHC-P image

Immunohistochemistry: Paraffin-embedded Mouse lung tissue stained with ARG66973 anti-Cytokeratin (pan) antibody at 1:400 dilution.