

ARG66972 anti-Cytokeratin 18 + 19 antibody

Package: 100 µl
Store at: -20°C

Summary

Product Description	Rabbit Polyclonal antibody recognizes Cytokeratin 18 + 19
Tested Reactivity	Hu
Tested Application	ICC/IF, IHC-P, WB
Host	Rabbit
Clonality	Polyclonal
Isotype	IgG
Target Name	Cytokeratin 18 + 19
Species	Human
Immunogen	Synthetic peptide around the middle region of Human Cytokeratin 18.
Conjugation	Un-conjugated
Alternate Names	Keratin, type I cytoskeletal 18; Cytokeratin-18; K18; CK-18; Cell proliferation-inducing gene 46 protein; Keratin-18; CYK18; Cytokeratin-19; K19; CK-19; K1CS; Keratin-19; CK19; Keratin, type I cytoskeletal 19

Application Instructions

Application table	Application	Dilution
	ICC/IF	1:200 - 1:500
	IHC-P	1:100 - 1:300
	WB	1:1000 - 1:3000
Application Note	* The dilutions indicate recommended starting dilutions and the optimal dilutions or concentrations should be determined by the scientist.	
Positive Control	MDA-MB-231; Colorectal carcinoma; Breast carcinoma	
Observed Size	~ 45 - 55 kDa	

Properties

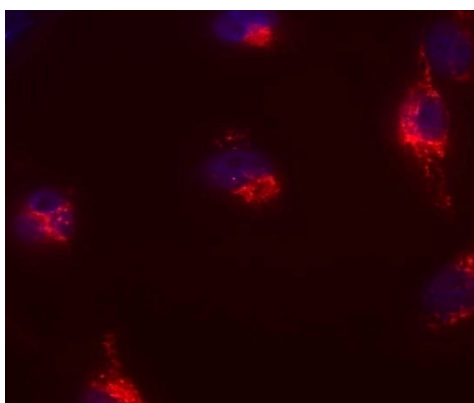
Form	Liquid
Purification	Affinity purified.
Buffer	100 mM Tris Glycine (pH 7.0), 0.025% ProClin 300 and 20% Glycerol.
Preservative	0.025% ProClin 300
Stabilizer	20% Glycerol
Storage instruction	For continuous use, store undiluted antibody at 2-8°C for up to a week. For long-term storage, aliquot and store at -20°C. Storage in frost free freezers is not recommended. Avoid repeated freeze/thaw cycles. Suggest spin the vial prior to opening. The antibody solution should be gently mixed before use.

Note For laboratory research only, not for drug, diagnostic or other use.

Bioinformation

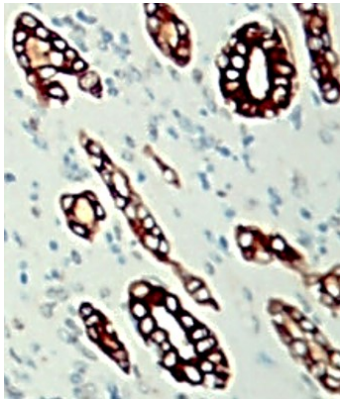
Gene Symbol	KRT18 + KRT19
Gene Full Name	keratin 18, type I; keratin 19, type I
Background	Cytokeratin 18, together with its filament partner Cytokeratin 8, are perhaps the most commonly found members of the intermediate filament gene family. They are expressed in single layer epithelial tissues of the body. Mutations in this gene have been linked to cryptogenic cirrhosis. Two transcript variants encoding the same protein have been found for this gene. [provided by RefSeq, Jul 2008]
Function	Cytokeratin 18 involved in the uptake of thrombin-antithrombin complexes by hepatic cells. When phosphorylated, plays a role in filament reorganization. Involved in the delivery of mutated CFTR to the plasma membrane. Together with KRT8, is involved in interleukin-6 (IL-6)-mediated barrier protection. [UniProt]
Highlight	Related products: Anti-Rabbit IgG secondary antibodies: Related news: Cancer Pathology Markers (SQ clones)
Calculated Mw	48 kDa
PTM	Phosphorylation at Ser-34 increases during mitosis. Hyperphosphorylated at Ser-53 in diseased cirrhosis liver. Phosphorylation increases by IL-6. Proteolytically cleaved by caspases during epithelial cell apoptosis. Cleavage occurs at Asp-238 by either caspase-3, caspase-6 or caspase-7. O-GlcNAcylation increases solubility, and decreases stability by inducing proteasomal degradation. [UniProt]

Images



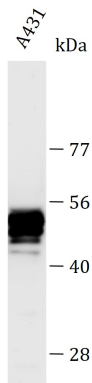
ARG66972 anti-Cytokeratin 18 + 19 antibody ICC/IF image

Immunofluorescence: MDA-MB-231 cells were fixed with 4% paraformaldehyde at RT for 10 min, permeabilized with 0.1% NP-40 at RT for 10 min and then cells were blocked with 5% BSA at RT for 30 min and stained with ARG66972 anti-Cytokeratin 18 + 19 antibody (red) at 1:150 dilution at 4°C for overnight. DAPI (blue) was used for nuclear staining.



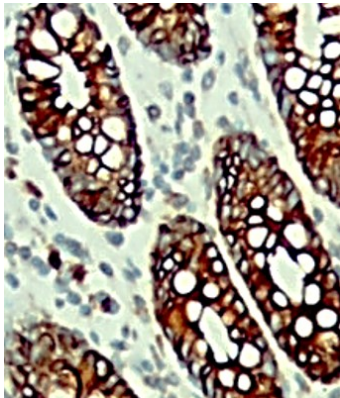
ARG66972 anti-Cytokeratin 18 + 19 antibody IHC-P image

Immunohistochemistry: Paraffin-embedded Human breast carcinoma tissue stained with ARG66972 anti-Cytokeratin 18 + 19 antibody at 1:100 dilution.



ARG66972 anti-Cytokeratin 18 + 19 antibody WB image

Western blot: A431 cell lysate stained with ARG66972 anti-Cytokeratin 18 + 19 antibody at 1:2000 dilution, overnight at 4°C.



ARG66972 anti-Cytokeratin 18 + 19 antibody IHC-P image

Immunohistochemistry: Paraffin-embedded Human colorectal carcinoma tissue stained with ARG66972 anti-Cytokeratin 18 + 19 antibody at 1:100 dilution.